

COMPANY: DEER LAKE OIL & GAS INC.

WELL: DEER LAKE OIL & GAS ET AL

FIELD: WESTERN ADVENTURE N

PROVINCE: NEWFOUNDLAND

PROVINCENEWFOUNDLAND

Field: Location: NORTHING: 5,456,519 Well: DEER LAKE OIL & GAS ET AL Company: DEER LAKE OIL & GAS INC.

Schlumberger

BOREHOLE SONIC LOG

LOCATION

NORTHING: 5,456,519 EASTING: 482,797

Permanent Datum: GROUND LEVEL

Log Measured From: DRILL FLOOR

Drilling Measured From: DRILL FLOOR

API Serial No. 2000-120-01-01

SECTION

NOB 5,4

Logging Date 18-JAN-2001

Run Number TWO

Depth Driller 1584 m

Schlumberger Depth 1575 m

Bottom Log Interval 1573 m

Top Log Interval 873 m

Casing Driller Size @ Depth 89,000 mm @ 872 m

Casing Schlumberger 873 m

Bit Size 75,770 mm

Type Fluid In Hole POLYMER - KCL

Density 1068 kg/m3

Viscosity 34 s

PH

MUD

Source Of Sample

MEASURED

RM @ Measured Temperature 0.162 ohm.m @ 5 degC

RMF @ Measured Temperature @

RMC @ Measured Temperature @

Source RMF RMC

RM @ MRT 0.066 @ 44 NO SAMPLE NO SAMPLE @ 44

Maximum Recorded Temperatures 44 degC 44

Circulation Stopped 16-JAN-2001 10:00

Logger On Bottom 18-JAN-2001 0:30

Unit Number 19 Location DARTMOUTH

Recorded By KELLI SASCO

Witnessed By STAN PODULSKY

TAL

10.1

COMPENSATED

K.B. 92.5 m

G.L. 90 m

D.F. 92.5 m

90 m

above Perm. Datum

EASTING:

482,797

C. TAL NO.1					
COMPENSATED					
K.B. 92.5 m					
G.L. 90 m					
D.F. 92.5 m					
/.: 90 m					
m above Perm. Datum					
KITHING: 56,519		EASTING: 482,797			
		Logging Date			
		Run Number			
		Depth Driller			
		Schlumberger Depth			
		Bottom Log Interval			
		Top Log Interval			
		Casing Driller Size @ Depth			
		Casing Schlumberger			
		Bit Size			
		Type Fluid In Hole			
		Density			
		Fluid Loss			
		Source Of Sample			
		RM @ Measured Temperature			
		RMF @ Measured Temperature			
		RMC @ Measured Temperature			
		Source RMF			
		RM @ MRT			
		Maximum Recorded Temperatures			
		Circulation Stopped			
		Logger On Bottom			
		Unit Number			
		Recorded By			
		Witnessed By			

THE DESCENT: DORE ENTERS, ON

**** DRILLER TD NOT REACHED DUE TO FISH REMAINING IN HOLE AT 1584M ****

** LOGS RUN TO 1575M AS PER CLIENT REQUEST **

ALL TOOLS RUN SLICK

SCHLUMBERGER LOGS (RUN 1, DATED: 3-AUG-2000) USED FOR CORRELATION

RIG: LONGYEAR SUPER 50

CREW 19: STEVE BEATON, MIKE DIGGDON

RUN 1

SERVICE ORDER #:
PROGRAM VERSION:
FLUID LEVEL:

6418567
9C0-413

RUN 2

SERVICE ORDER #:
PROGRAM VERSION:
FLUID LEVEL:

LOGGED INTERVAL

START

STOP

LOGGED INTERVAL

START

STOP

[illegible]

RUN 1

RUN 2

SURFACE EQUIPMENT

WITM (DTS)-A

DOWNHOLE EQUIPMENT

LEH-ST
LEH-ST

9.69

STGC-B
STGH-B
STGC0-A
STGC1-B

8.78

Gamma Ray

8.25

CTEM

7.78

TelStatus

6.43

AH-201
AH-201

6.43

SSLT-B
SSLX-BB
SSAS-BB
SSLC-BA
SSCH-BA

5.88

TxC

TxA

RX ARRAY

R1

R2

R3

R4

R5

R6

TxB

3.12

HV DF
Tension ACCZ
TOOL ZERO

0.00

MAXIMUM STRING DIAMETER 64 MM
MEASUREMENTS RELATIVE TO TOOL ZERO
ALL LENGTHS IN METERS

Input DLIS Files						
DEFAULT	SSLT .007	FN:6	PRODUCER	18-Jan-2001 00:59	1577.6 M	789.7 M
Output DLIS Files						
DEFAULT	SSLT .008	FN:7	PRODUCER	18-Jan-2001 03:08	1576.1 M	788.2 M

Input DLIS Files						
DEFAULT	SSLT .007	FN:6	PRODUCER	18-Jan-2001 00:59	1577.6 M	789.7 M
Output DLIS Files						
DEFAULT	SSLT .008	FN:7	PRODUCER	18-Jan-2001 03:08	1576.1 M	788.2 M

Input DLIS Files						
DEFAULT	SSLT .007	FN:6	PRODUCER	18-Jan-2001 00:59	1577.6 M	789.7 M
Output DLIS Files						
DEFAULT	SSLT .008	FN:7	PRODUCER	18-Jan-2001 03:08	1576.1 M	788.2 M

Input DLIS Files						
DEFAULT	SSLT .007	FN:6	PRODUCER	18-Jan-2001 00:59	1577.6 M	789.7 M
Output DLIS Files						
DEFAULT	SSLT .008	FN:7	PRODUCER	18-Jan-2001 03:08	1576.1 M	788.2 M

OP System Version: 9C0-413

MCM

SSLT-B	OP9-KP2	STGC-B	OP9-KP2
---------------	----------------	---------------	----------------

OP System Version: 9C0-413

MCM

SSLT-B	OP9-KP2	STGC-B	OP9-KP2
---------------	----------------	---------------	----------------

OP System Version: 9C0-413

MCM

SSLT-B	OP9-KP2	STGC-B	OP9-KP2
--------	---------	--------	---------

	<p>PIP SUMMARY</p> <ul style="list-style-type: none"> └ Integrated Transit Time Minor Pip Every 1 MS └ Integrated Transit Time Major Pip Every 10 MS 	
<p>Time Mark Every 60 S</p>		

	<p>PIP SUMMARY</p> <ul style="list-style-type: none"> └ Integrated Transit Time Minor Pip Every 1 MS └ Integrated Transit Time Major Pip Every 10 MS 	
<p>Time Mark Every 60 S</p>		

[illegible][illegible][illegible]

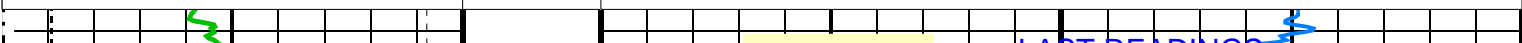
	Tension (TENS)		
	20000 (N)	0	
Gamma Ray (GR_STGC)			
0	(GAPI)	150	
Bit Size (BS)		SSLT Delta-T (multishot 3'-5') (DT)	
50	(MM)	300	
		500	100
		(US/M)	

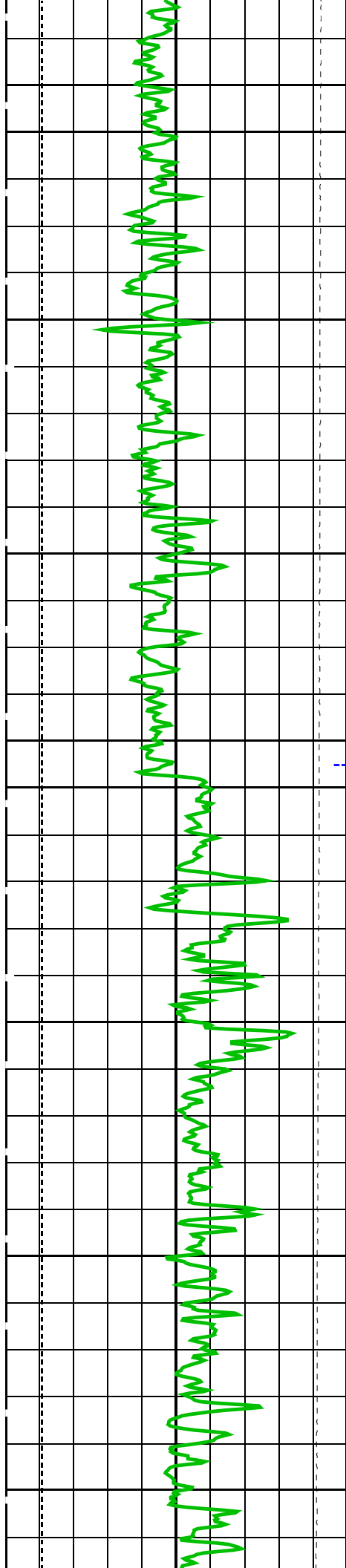
	Tension (TENS)		
	20000 (N)	0	
Gamma Ray (GR_STGC)			
0	(GAPI)	150	
Bit Size (BS)		SSLT Delta-T (multishot 3'-5') (DT)	
50	(MM)	300	500
			(US/M)
			100

	Tension (TENS)		
	20000 (N)	0	
Gamma Ray (GR_STGC)			
0	(GAPI)	150	
Bit Size (BS)		SSLT Delta-T (multishot 3'-5') (DT)	
50	(MM)	300	500
			(US/M)
			100

SSLT Delta-T (multishot 3'-5') (DT)		
500	(US/M)	100

SSLT Delta-T (multishot 3'-5') (DT)		
500	(US/M)	100





--CASING--

800

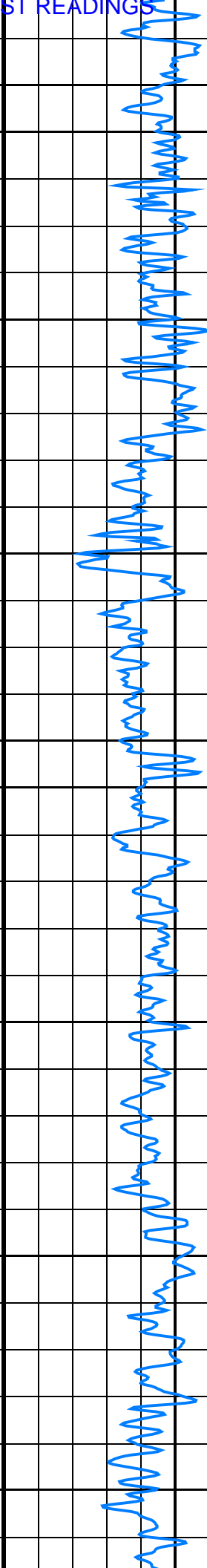
850

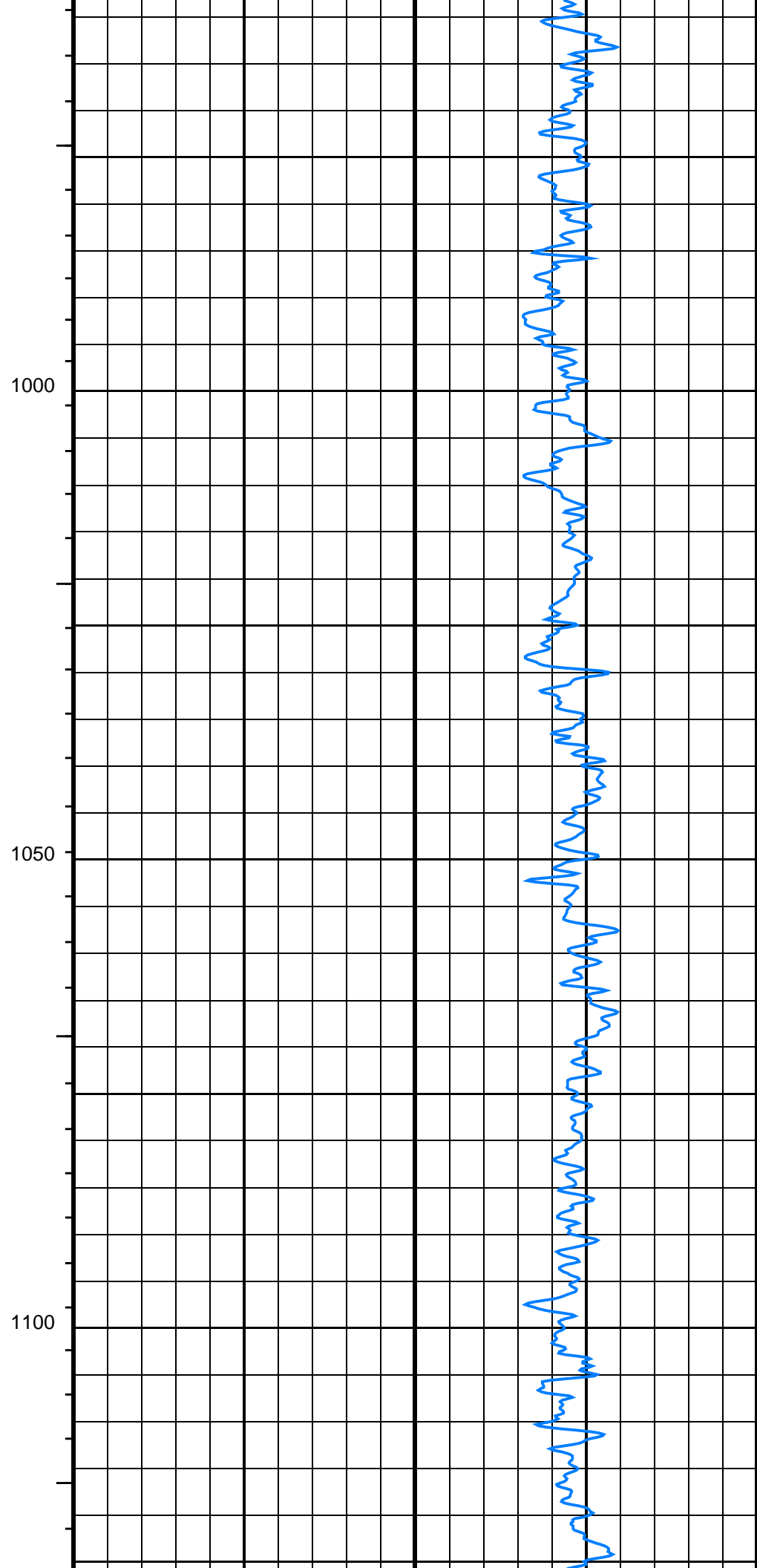
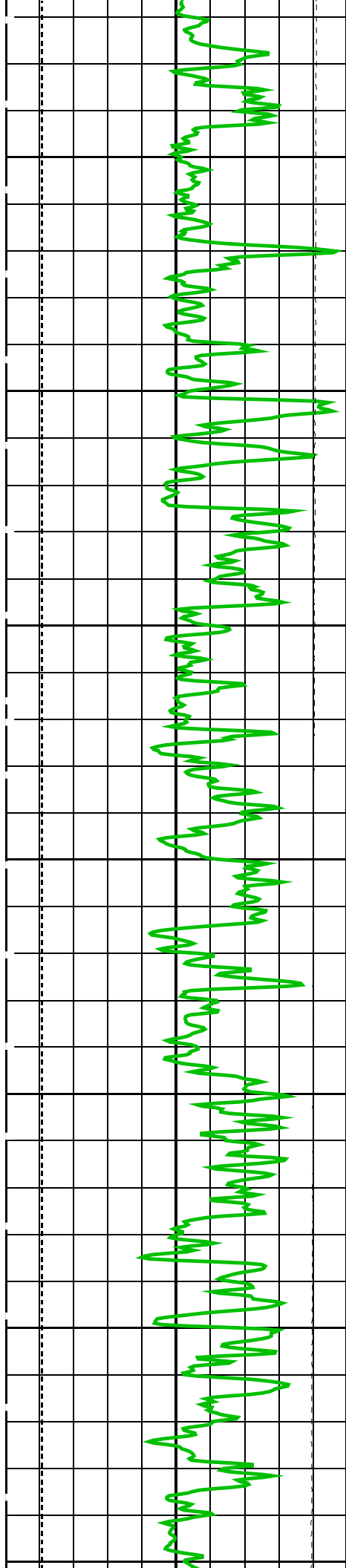
900

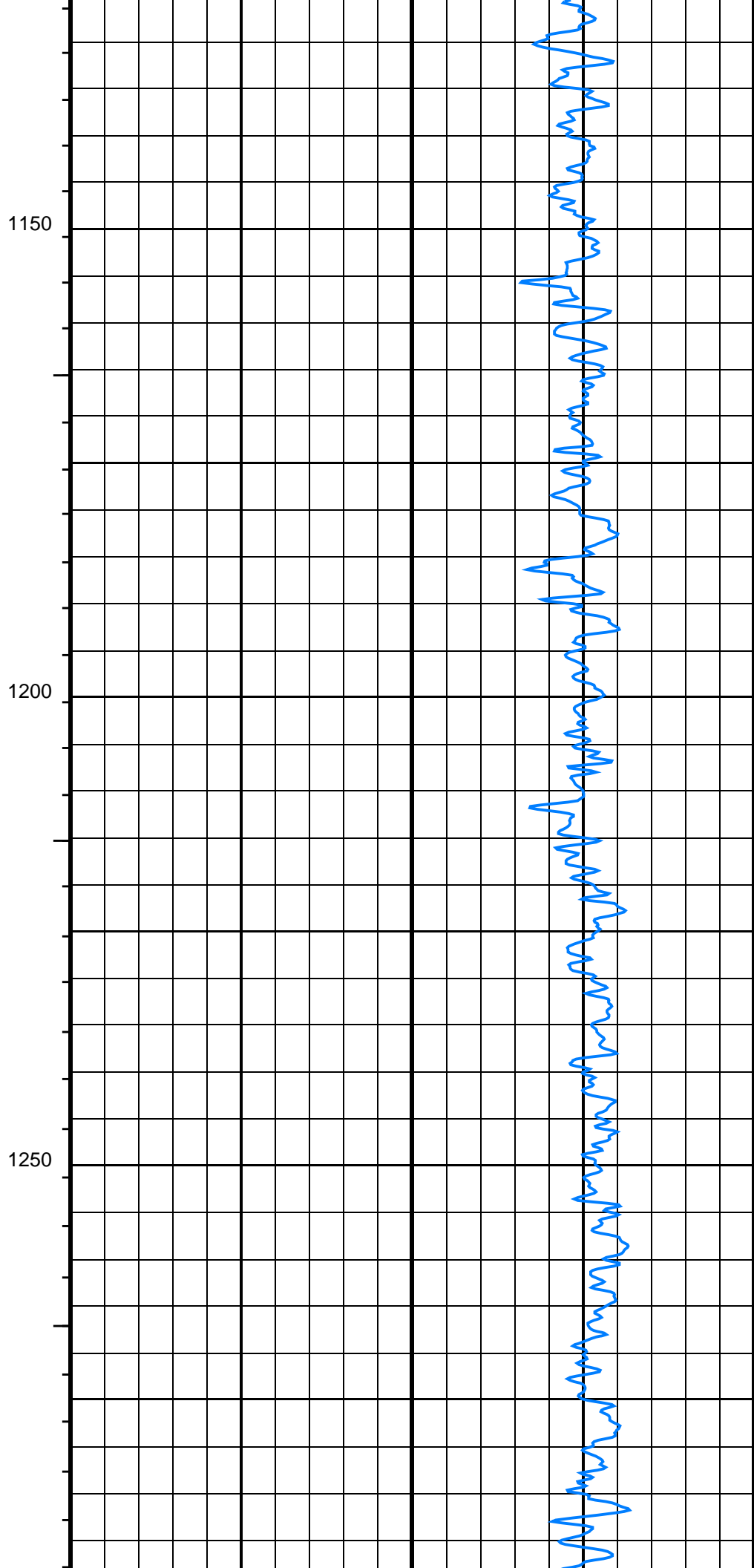
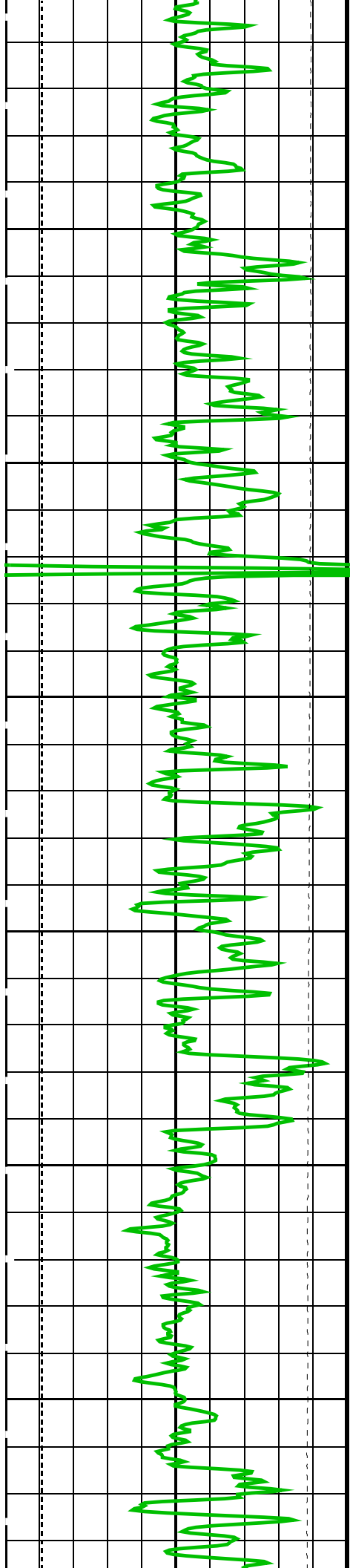
950

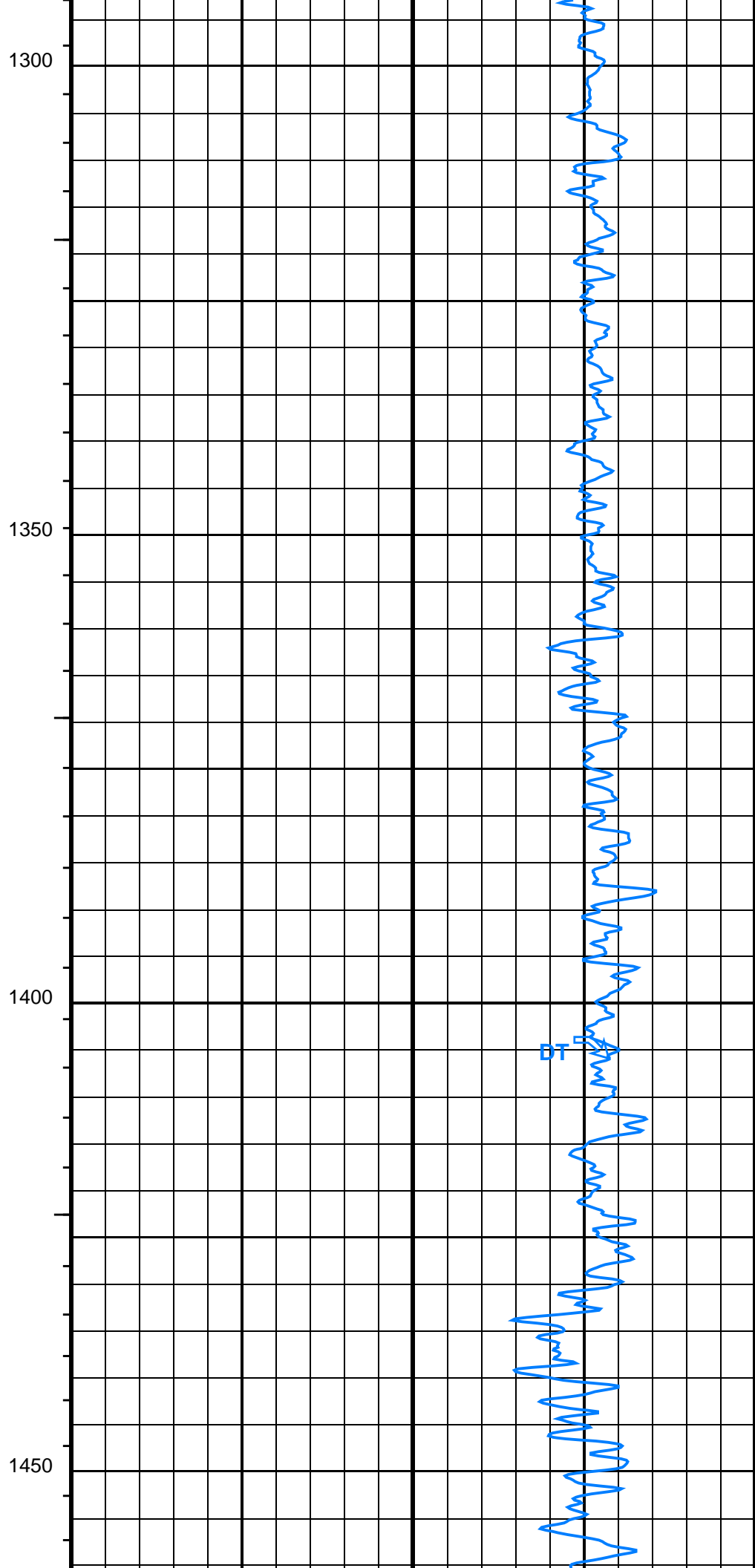
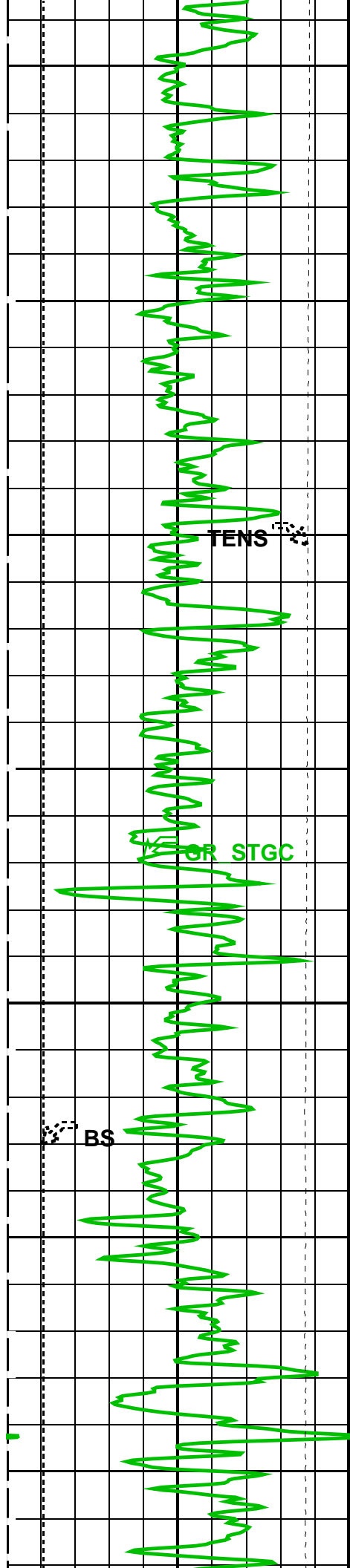
MAIN PASS

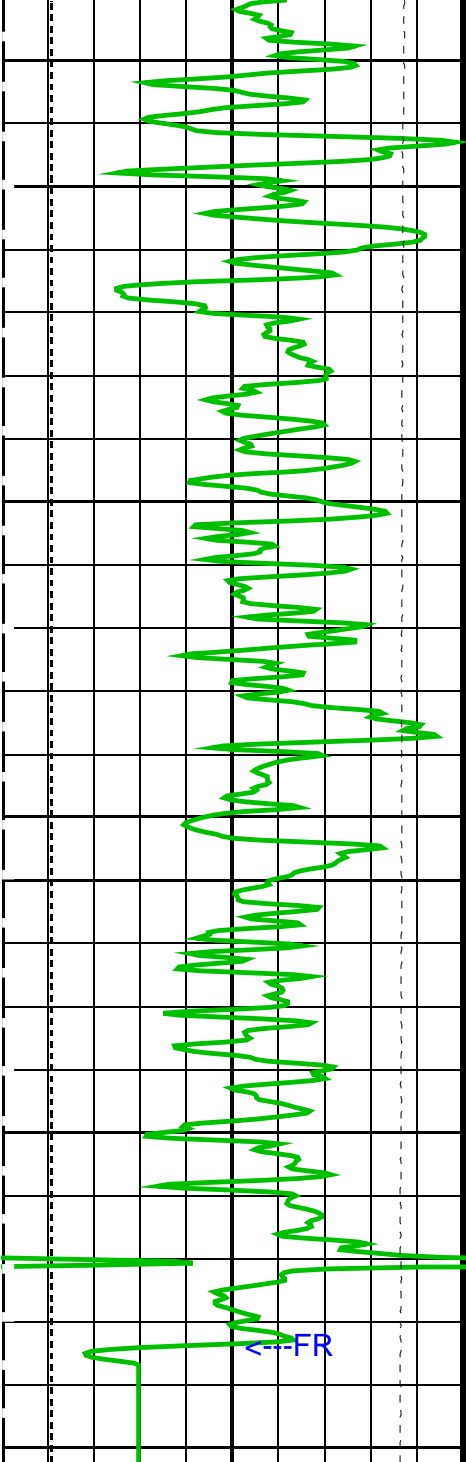
LAST READINGS



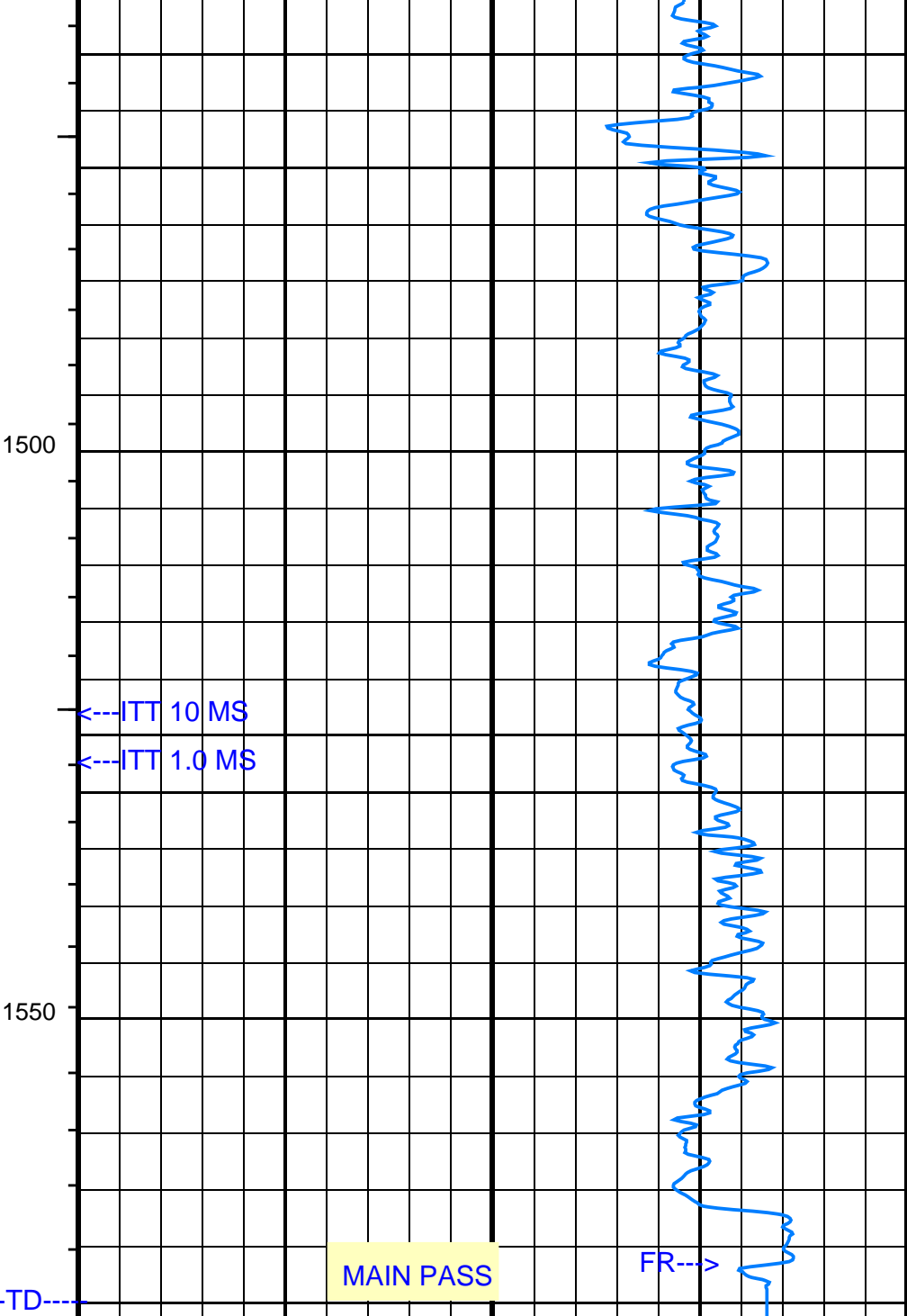








Bit Size (BS)	
50	300
(MM)	
Gamma Ray (GR_STGC)	
0	150
(GAPI)	
Tension (TENS)	
20000	0
(N)	



SSLT Delta-T (multishot 3'-5') (DT)	
500	100
(US/M)	

PIP SUMMARY

- Integrated Transit Time Minor Pip Every 1 MS
- Integrated Transit Time Major Pip Every 10 MS

Time Mark Every 60 S

Parameters

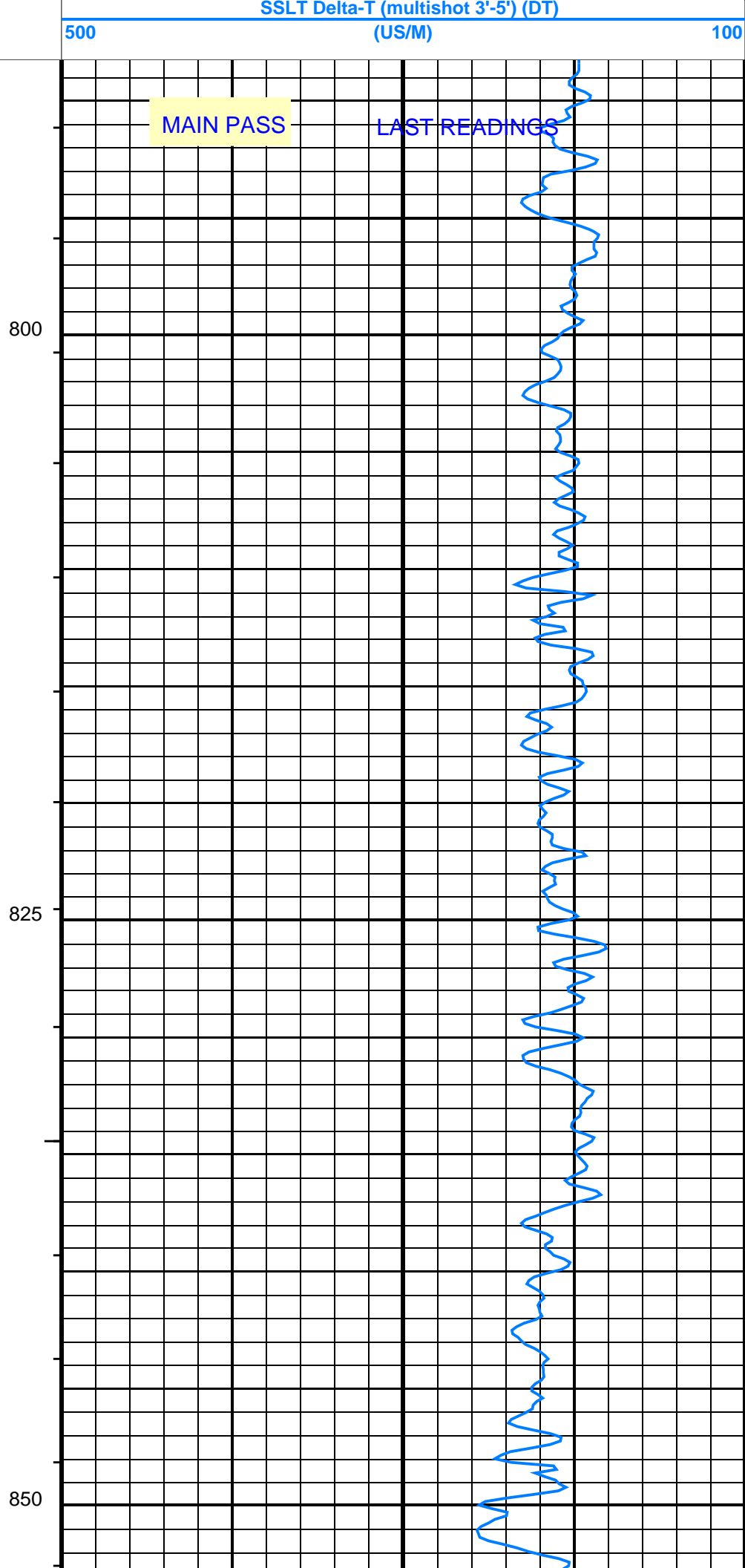
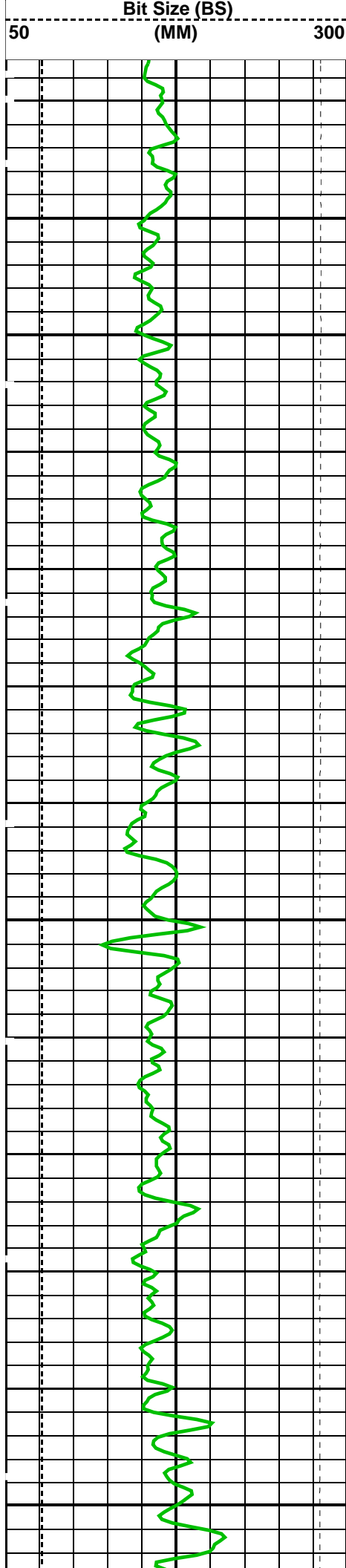
DLIS Name	Description	Value
ACSR	Array Cycle Skip Recovery	ON
AMSG	Auxilliary Minimum Sliding Gate	180 US
BS	Bit Size	75.770 MM
CBLG	CBL Gate Width	80 US

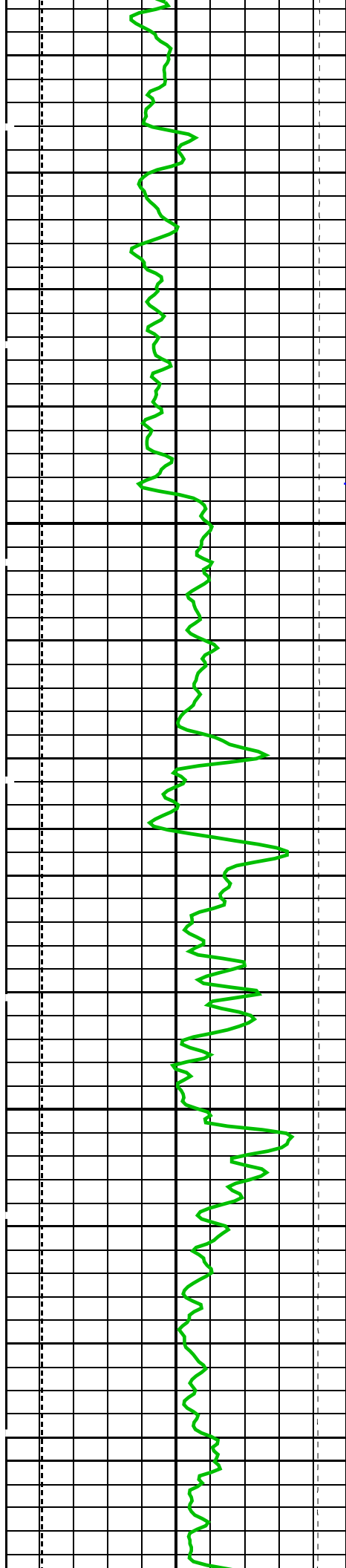
DDE1	Digitizing Delay 1 - Upper Tx	40	US
DDE2	Digitizing Delay 2 - Lower Tx	40	US
DDE3	Digitizing Delay 3 - Far Tx	40	US
DETE	Detection Peak	E2	
DFAD_ATC	DFAD Automatic Threshold Control	ON	
DFAD_INTERVAL_MODE	Detection Interval Mode for first arrival	TRACK	
DLSR	Depth Log Sampling Rate	TT1.5_WF6	
DO	Depth Offset	-1.5	M
DORL	Depth Offset Repeat Analysis	-1.5	M
DSIN	Digitizing Sample Interval	10	US
DTCM	Delta-T Computation Mode	FULL	
DTLCM	Delta-T Long Computation Mode	FULL	
DWCO	Digitizing Word Count	256	
GAI1	Gain Control 1 - Upper Tx	HIGH	
GAI2	Gain Control 2 - Lower Tx	HIGH	
GAI3	Gain Control 3 - Far Tx	HIGH	
MAHTR	Manual High Threshold Reference	40	
MNHTR	Minimum High Threshold Reference	30	
MODE	Sonic Firing Mode	DT_BHC	
NMSG	Near Minimum Sliding Gate	140	US
NMXG	Near Maximum Sliding Gate	750	US
NUMP	Number of Detection Passes	2	
NWI	Number of Waveform Items	6	
PP	Playback Processing	NORMAL	
RATE	Sonic Firing Rate	8.92857	HZ
SFAF	Sonic Formation Attenuation Factor	0	DB/M
SGAD	Sliding Gate Allow/Disallow	ON	
SGCL	Sliding Gate Closing Delta-T	558	US/M
SGCW	Sliding Gate Closing Width	33	US
SGDT	Sliding Gate Delta-T	131	US/M
SGW	Sliding Gate Width	80	US
SLEV	Signal Level for Threshold Control	5000	
WMAG	DFAD Waveform Magnifier	1	
ZCGW	Zero Crossing Gate Width	100	US
ZCTT	Option to compute Zero Crossing Transit Time	OFF	

Format: SSLT_DT_1 Vertical Scale: 1:600 Graphics File Created: 18-Jan-2001 03:08

OP System Version: 9C0-413						
MCM						
SSLT-B	OP9-KP2		STGC-B	OP9-KP2		
Input DLIS Files						
DEFAULT	SSLT .007	FN:6	PRODUCER	18-Jan-2001 00:59	1577.6 M	789.7 M
Output DLIS Files						
DEFAULT	SSLT .008	FN:7	PRODUCER	18-Jan-2001 03:08		

Input DLIS Files						
DEFAULT	SSLT .007	FN:6	PRODUCER	18-Jan-2001 00:59	1577.6 M	789.7 M
Output DLIS Files						
DEFAULT	SSLT .008	FN:7	PRODUCER	18-Jan-2001 03:08	1576.1 M	788.2 M
OP System Version: 9C0-413						
MCM						
SSLT-B	OP9-KP2		STGC-B	OP9-KP2		
PIP SUMMARY						
└ Integrated Transit Time Minor Pip Every 1 MS						
└ Integrated Transit Time Major Pip Every 10 MS						
Time Mark Every 60 S						
		Tension (TENS)				
		20000 (N) 0				
Gamma Ray (GR_STGC)						
0		(GAPI) 150				

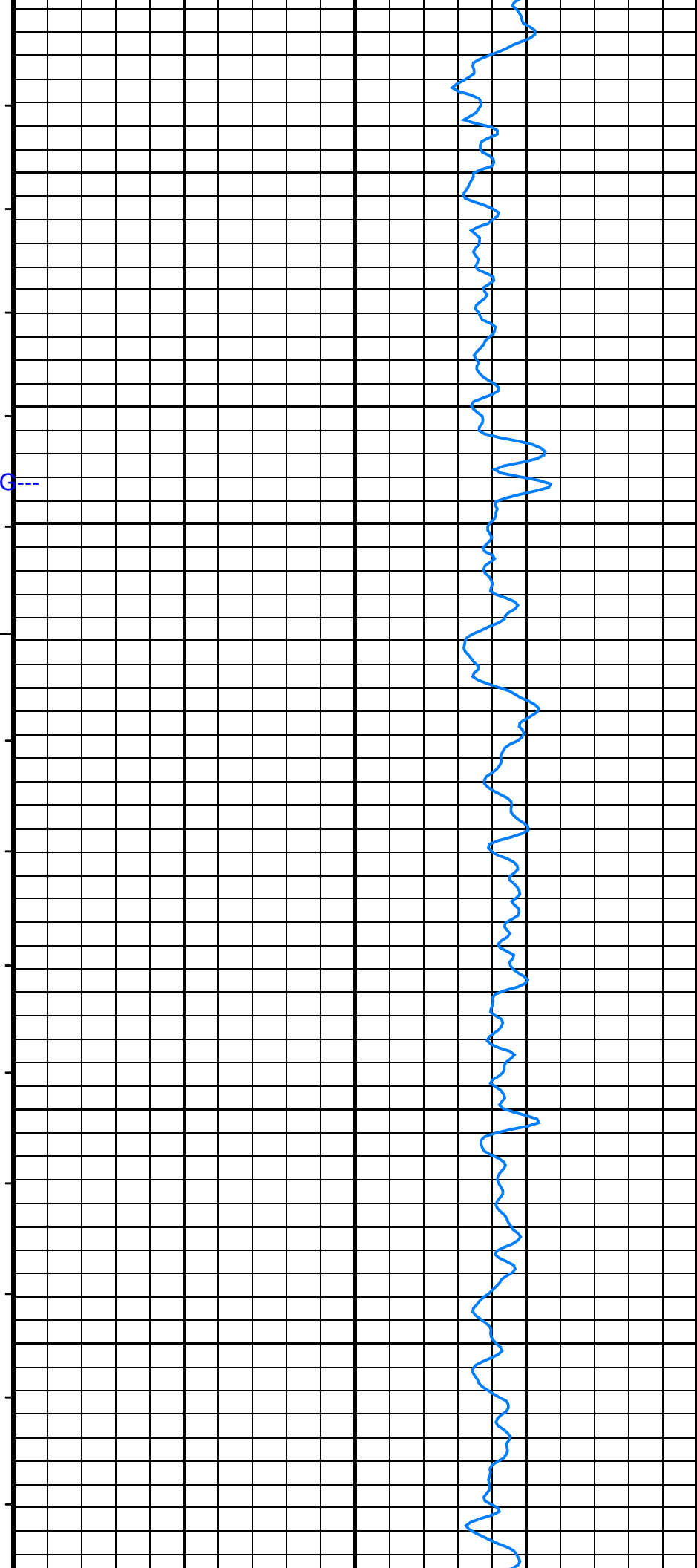


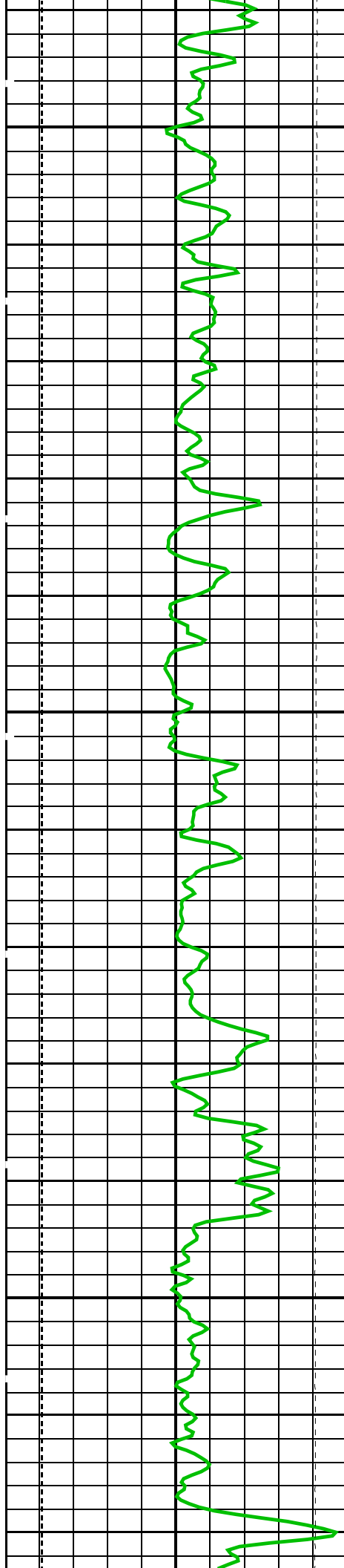


---CASING---

875

900

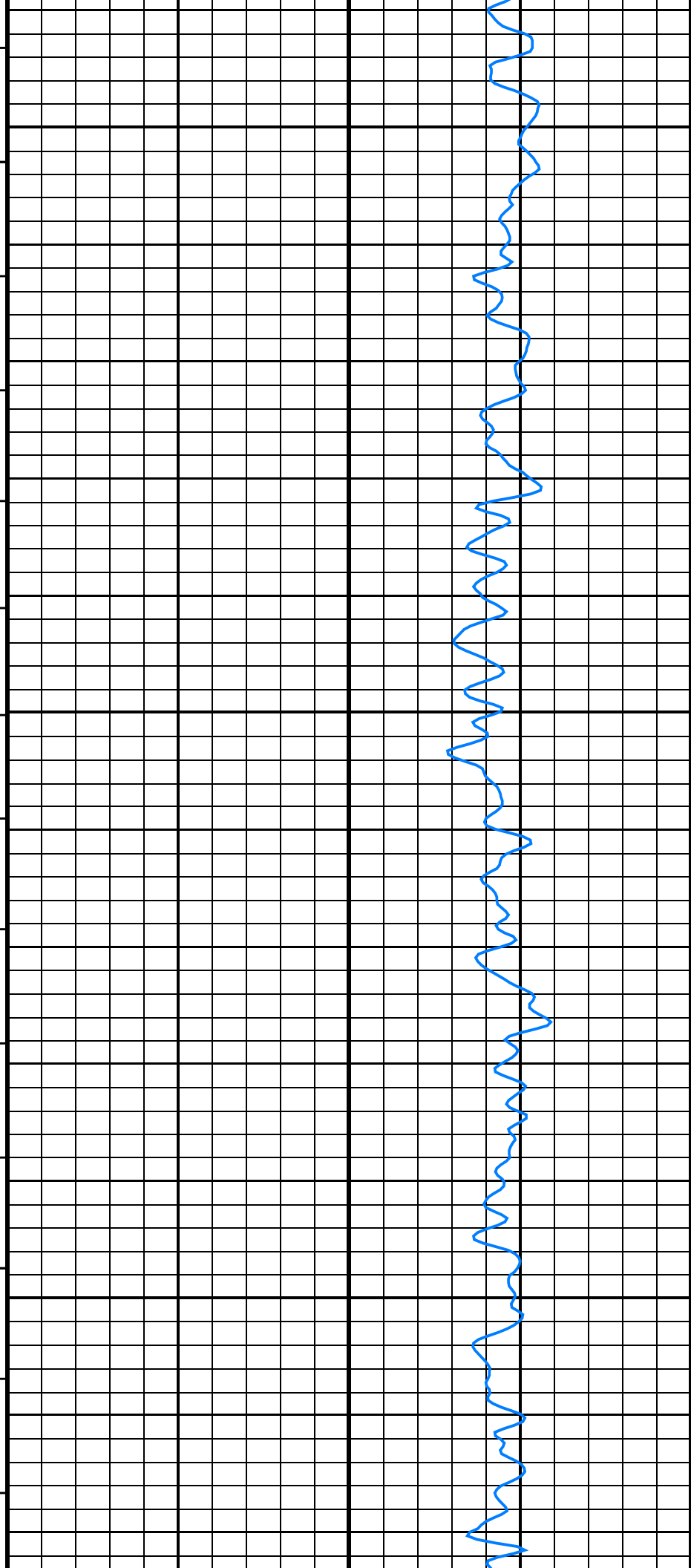


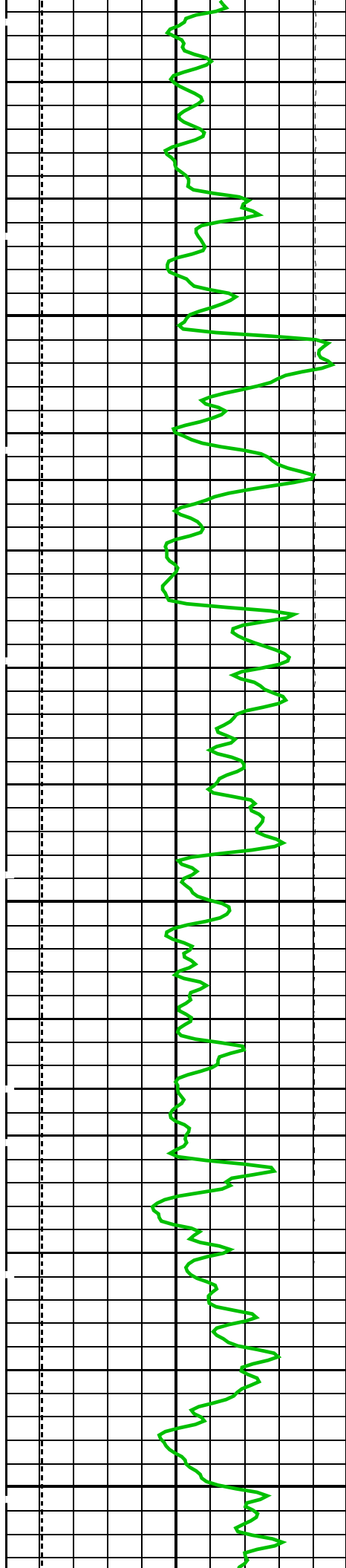


925

950

975

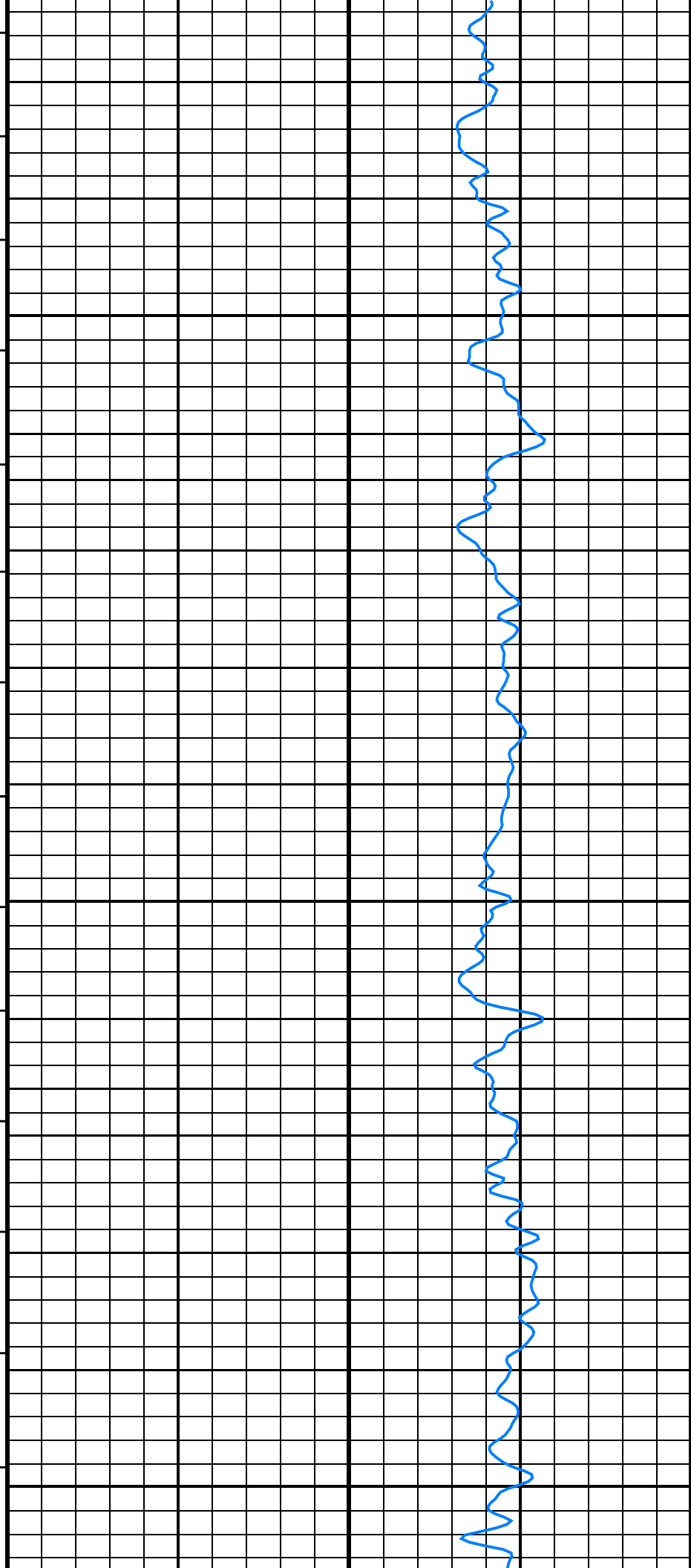


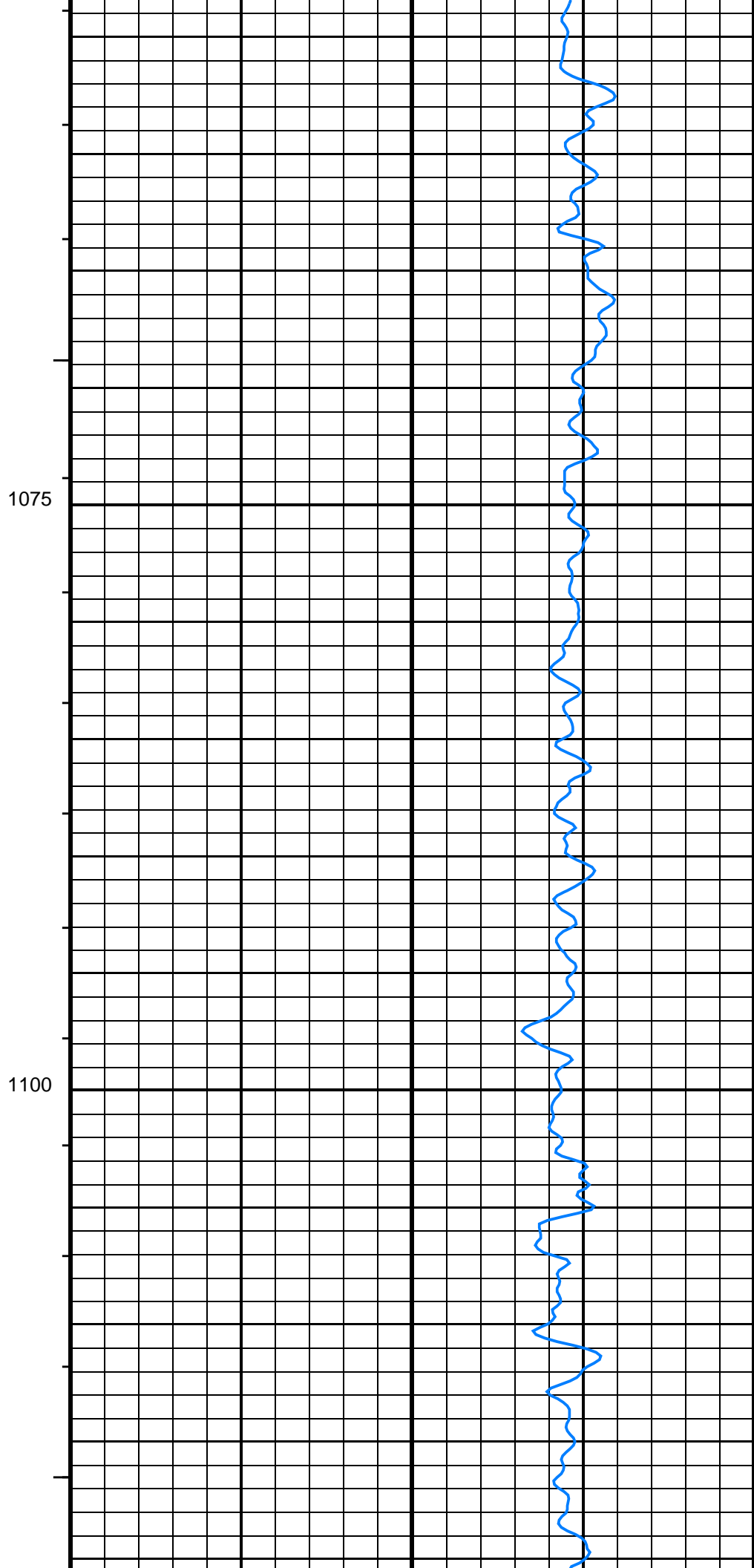
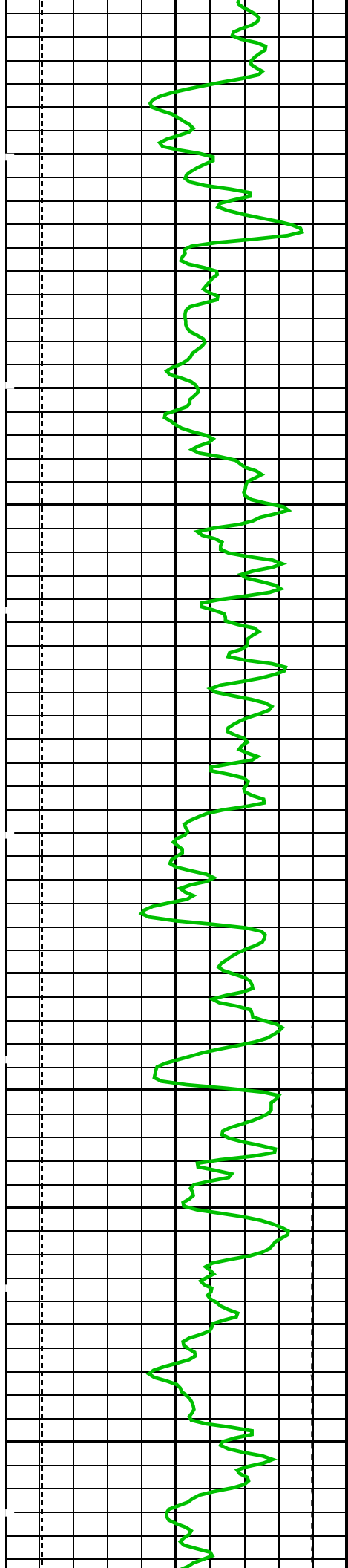


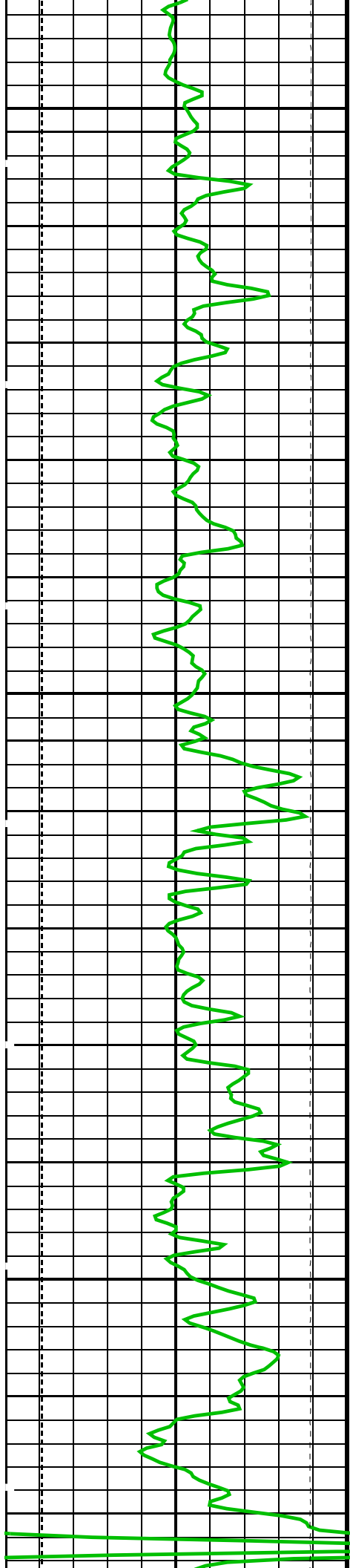
1000

1025

1050



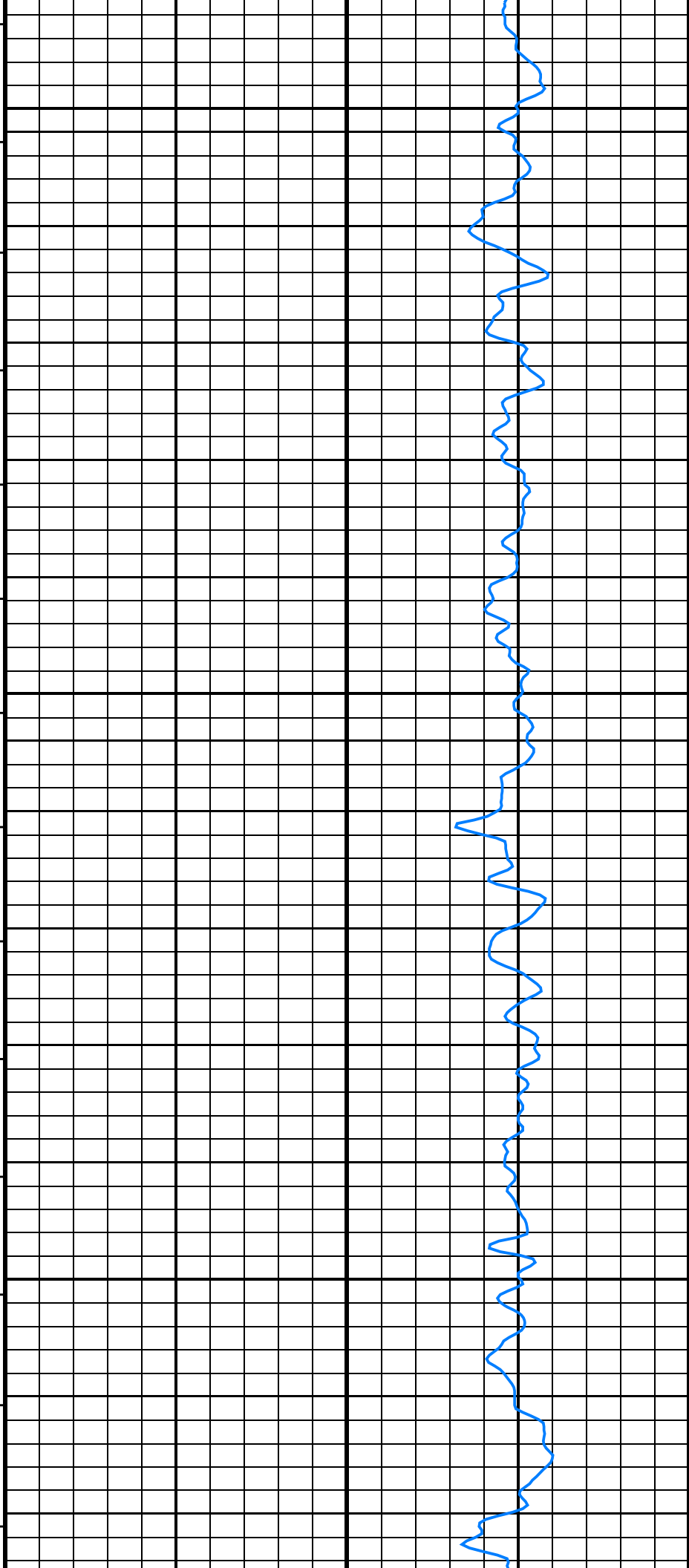


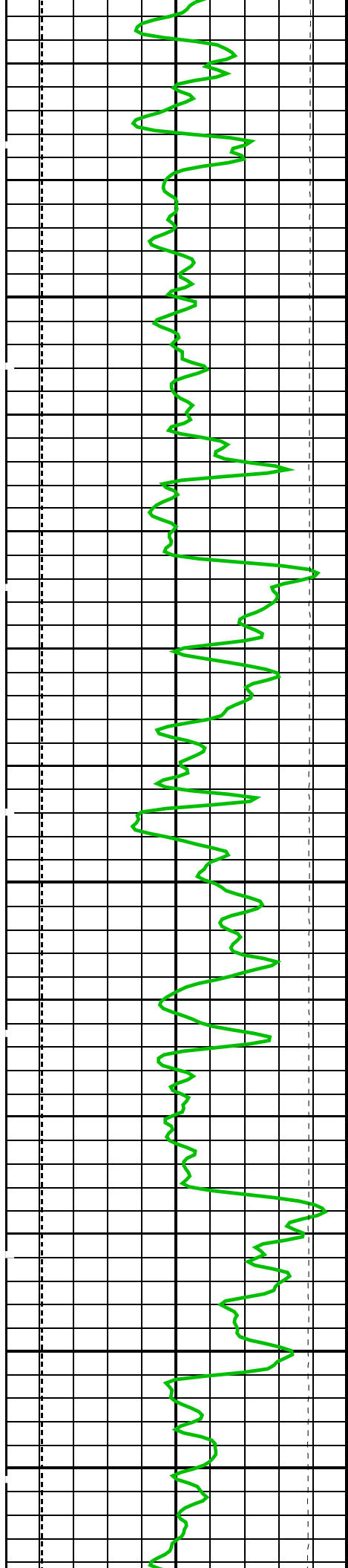


1125

1150

1175

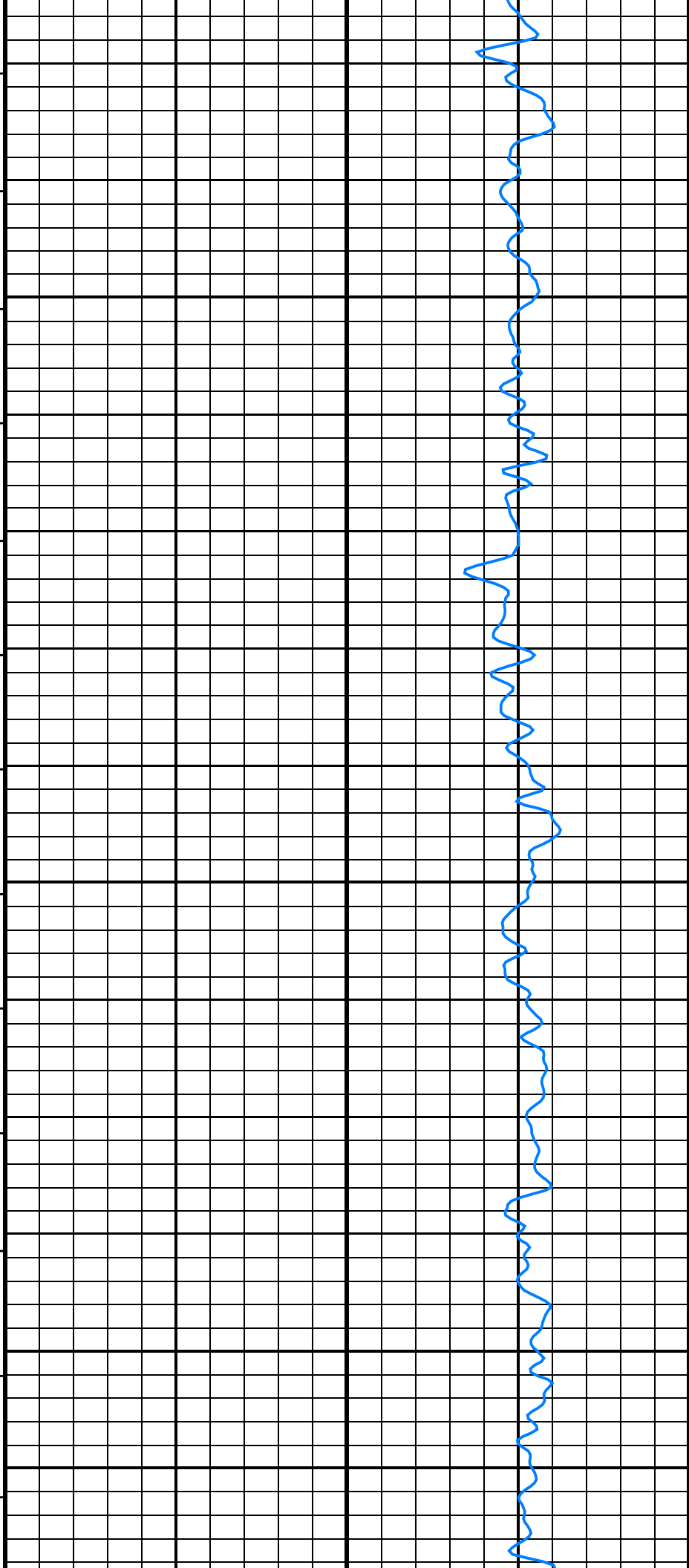


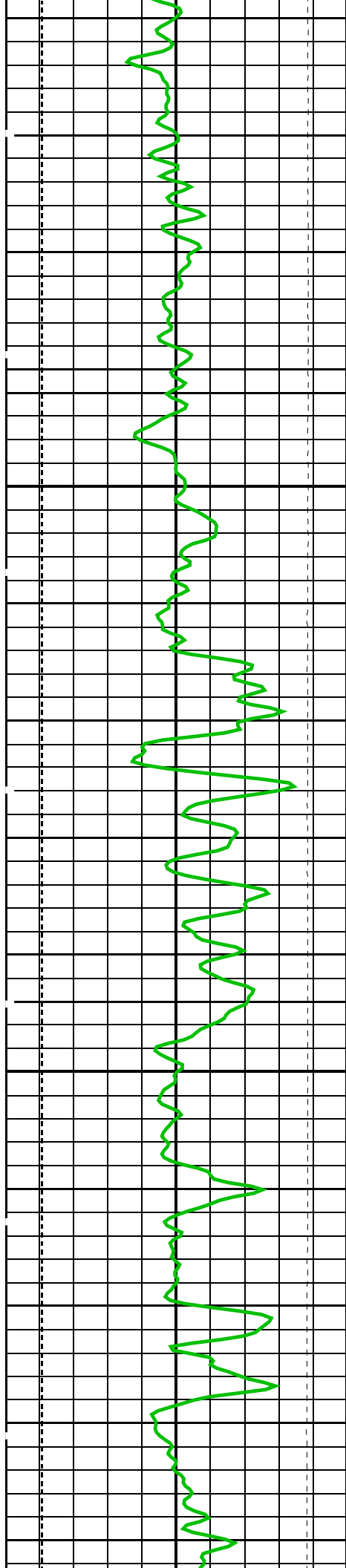


1200

1225

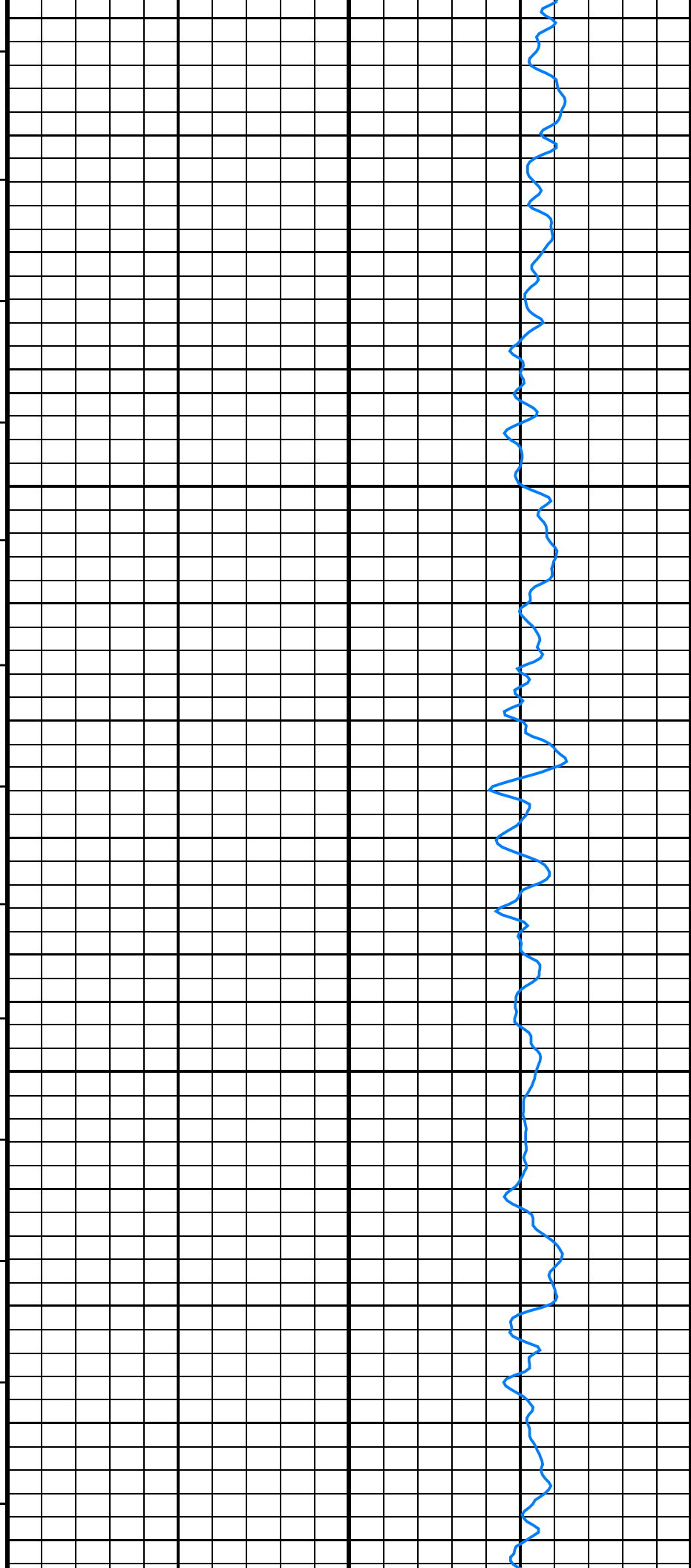
1250

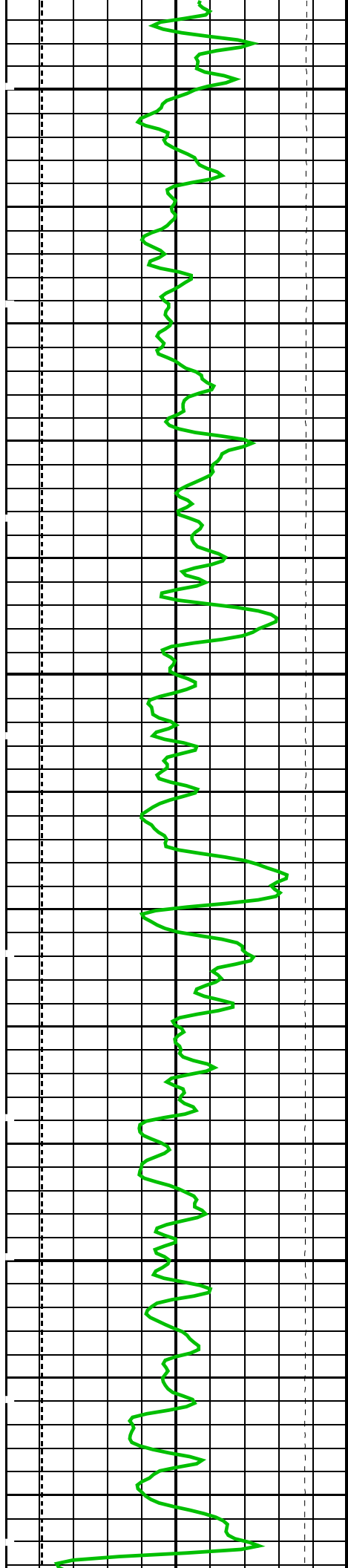




1275

1300

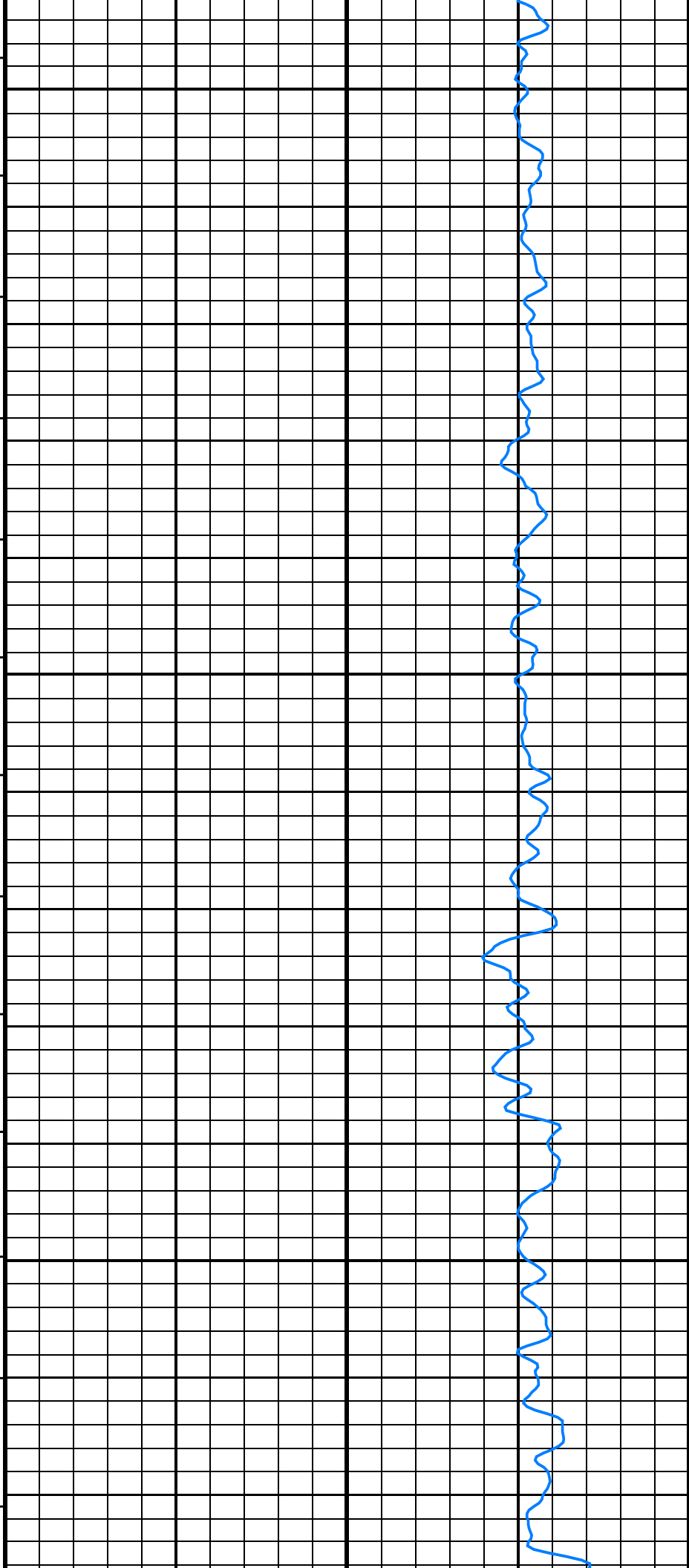


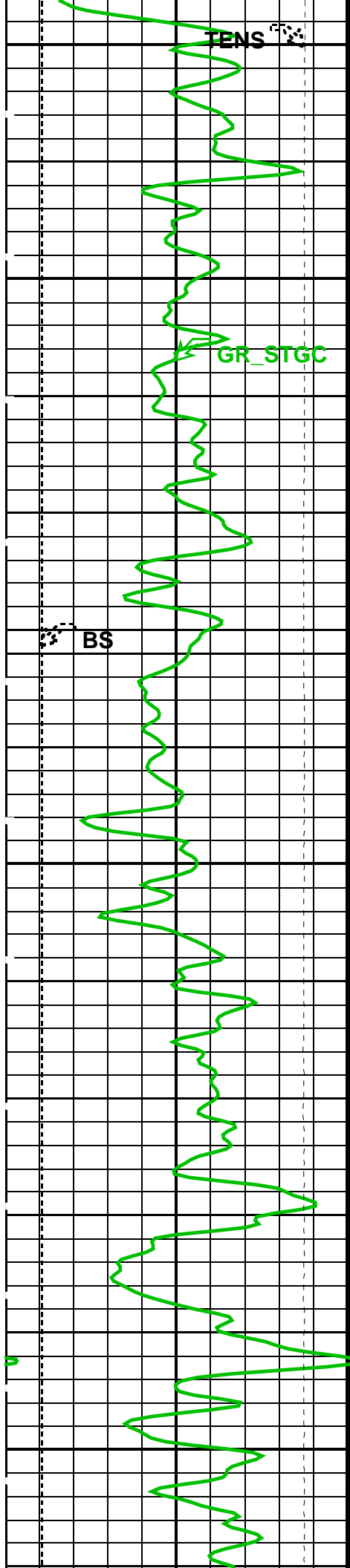


1325

1350

1375

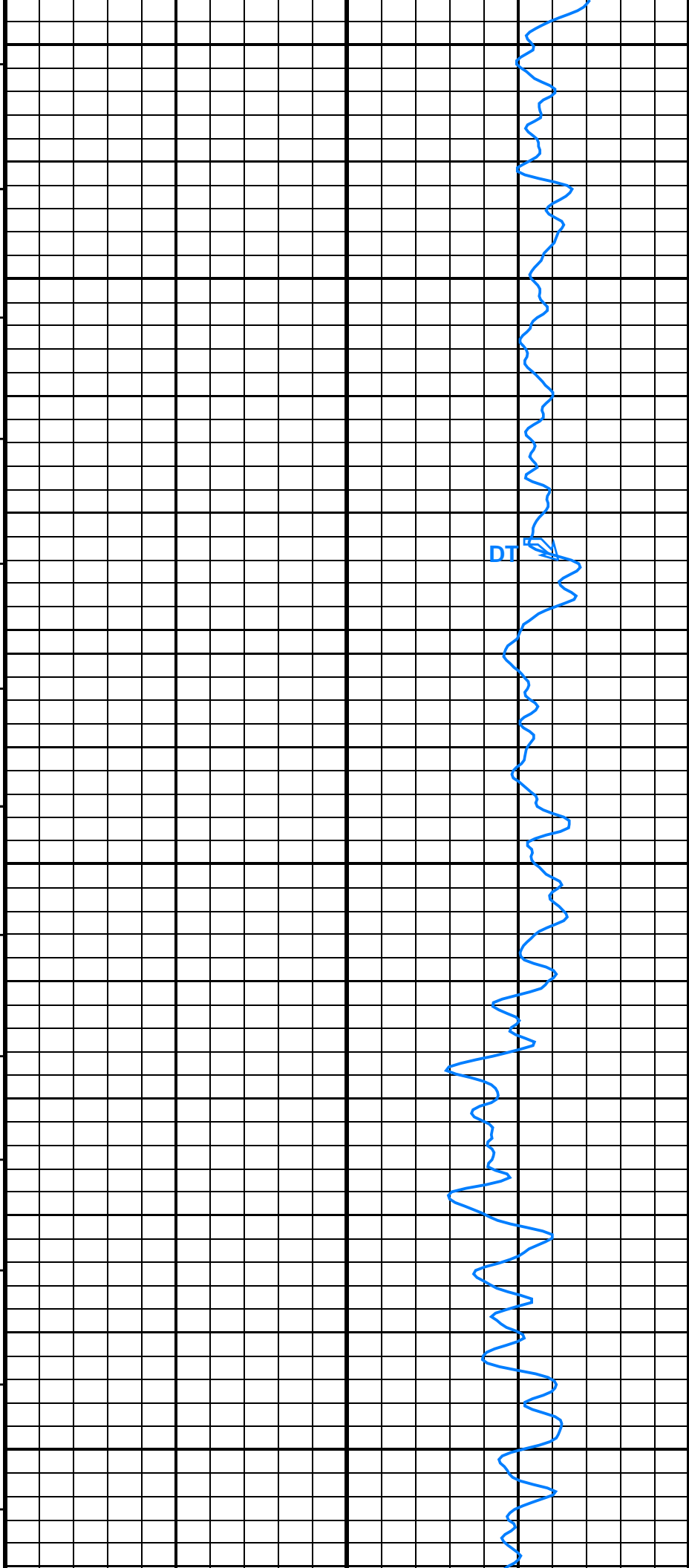


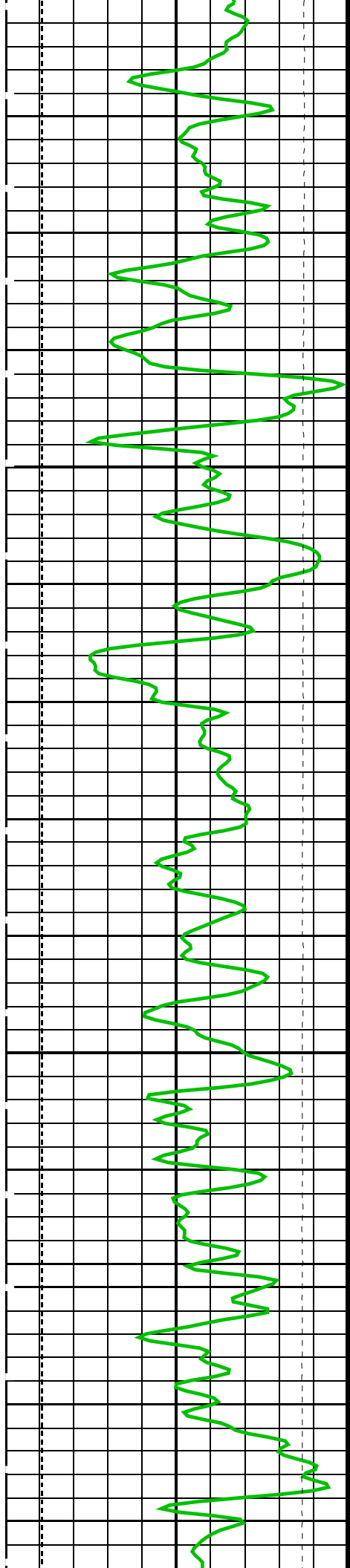


1400

1425

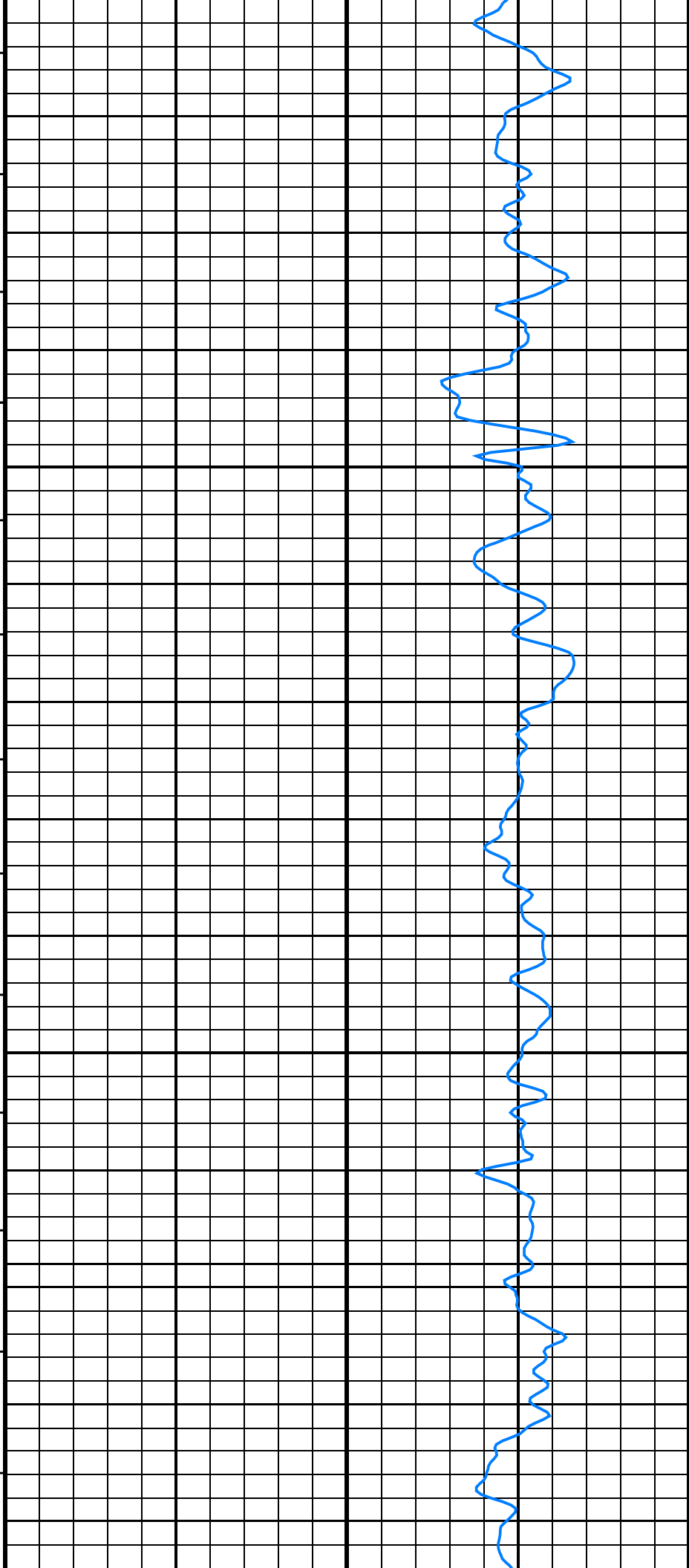
1450

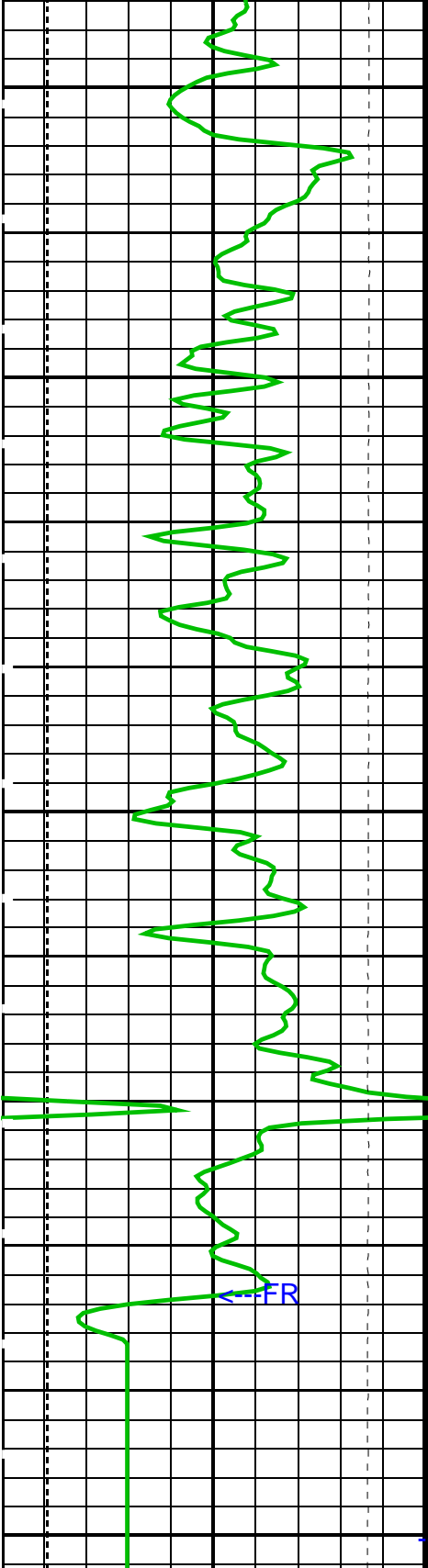




1475

1500

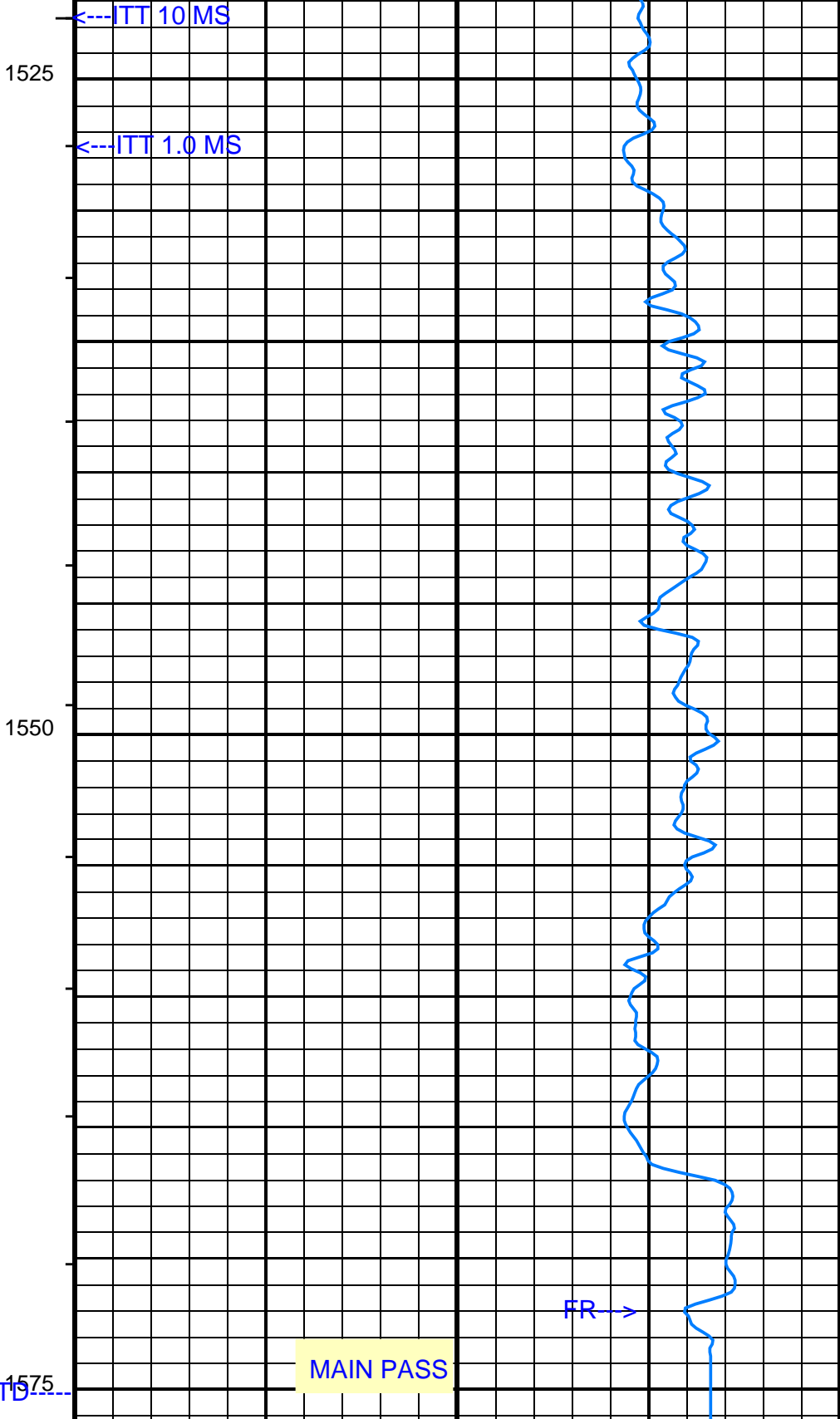




Bit Size (BS)
(MM)

Gamma Ray (GR_STGC)
(GAPI)

Tension (TENS)
20000 (N)



SSLT Delta-T (multishot 3'-5') (DT)
(US/M)

PIP SUMMARY

- └ Integrated Transit Time Minor Pip Every 1 MS
- └ Integrated Transit Time Major Pip Every 10 MS

Time Mark Every 60 S

Parameters			
DLIS Name	Description	Value	
ACSR	Array Cycle Skip Recovery	ON	
AMSG	Auxilliary Minimum Sliding Gate	180	US
BS	Bit Size	75.770	MM
CBLG	CBL Gate Width	80	US
DDE1	Digitizing Delay 1 - Upper Tx	40	US
DDE2	Digitizing Delay 2 - Lower Tx	40	US
DDE3	Digitizing Delay 3 - Far Tx	40	US
DETE	Detection Peak	E2	
DFAD_ATC	DFAD Automatic Threshold Control	ON	
DFAD_INTERVAL_MODE	Detection Interval Mode for first arrival	TRACK	
DLSR	Depth Log Sampling Rate	TT1.5_WF6	
DO	Depth Offset	-1.5	M
DORL	Depth Offset Repeat Analysis	-1.5	M
DSIN	Digitizing Sample Interval	10	US
DTCM	Delta-T Computation Mode	FULL	
DTLCM	Delta-T Long Computation Mode	FULL	
DWCO	Digitizing Word Count	256	
GAI1	Gain Control 1 - Upper Tx	HIGH	
GAI2	Gain Control 2 - Lower Tx	HIGH	
GAI3	Gain Control 3 - Far Tx	HIGH	
MAHTR	Manual High Threshold Reference	40	
MNHTR	Minimum High Threshold Reference	30	
MODE	Sonic Firing Mode	DT_BHC	
NMSG	Near Minimum Sliding Gate	140	US
NMXG	Near Maximum Sliding Gate	750	US
NUMP	Number of Detection Passes	2	
NWI	Number of Waveform Items	6	
PP	Playback Processing	NORMAL	
RATE	Sonic Firing Rate	8.92857	HZ
SFAF	Sonic Formation Attenuation Factor	0	DB/M
SGAD	Sliding Gate Allow/Disallow	ON	
SGCL	Sliding Gate Closing Delta-T	558	US/M
SGCW	Sliding Gate Closing Width	33	US
SGDT	Sliding Gate Delta-T	131	US/M
SGW	Sliding Gate Width	80	US
SLEV	Signal Level for Threshold Control	5000	
WMAG	DFAD Waveform Magnifier	1	
ZCGW	Zero Crossing Gate Width	100	US
ZCTT	Option to compute Zero Crossing Transit Time	OFF	

Format: SSLT_DT

Vertical Scale: 1:240

Graphics File Created: 18-Jan-2001 03:08

OP System Version: 9C0-413			
MCM			
SSLT-B	OP9-KP2	STGC-B	OP9-KP2
Input DLIS Files			
DEFAULT	SSLT .007	FN:6 PRODUCER	18-Jan-2001 00:59
			1577.6 M
			789.7 M
Output DLIS Files			
DEFAULT	SSLT .008	FN:7 PRODUCER	18-Jan-2001 03:08

Input DLIS Files			
DEFAULT	SSLT .007	FN:6 PRODUCER	18-Jan-2001 00:59
			1577.6 M
			789.7 M
DEFAULT	SSLT .006	FN:5 PRODUCER	18-Jan-2001 00:36
			1577.9 M
			1510.8 M
Output DLIS Files			
DEFAULT	SSLT .008	FN:7 PRODUCER	18-Jan-2001 03:08

OP System Version: 9C0-413			
MCM			
SSLT-B	OP9-KP2	STGC-B	OP9-KP2

└ Integrated Transit Time Minor Pip Every 1 MS
└ Integrated Transit Time Major Pip Every 10 MS

Time Mark Every 60 S

TENS_REP Curve
(TENS_REP)

20000 (N) 0

GR_STGC_REP Curve (GR_STGC_REP)

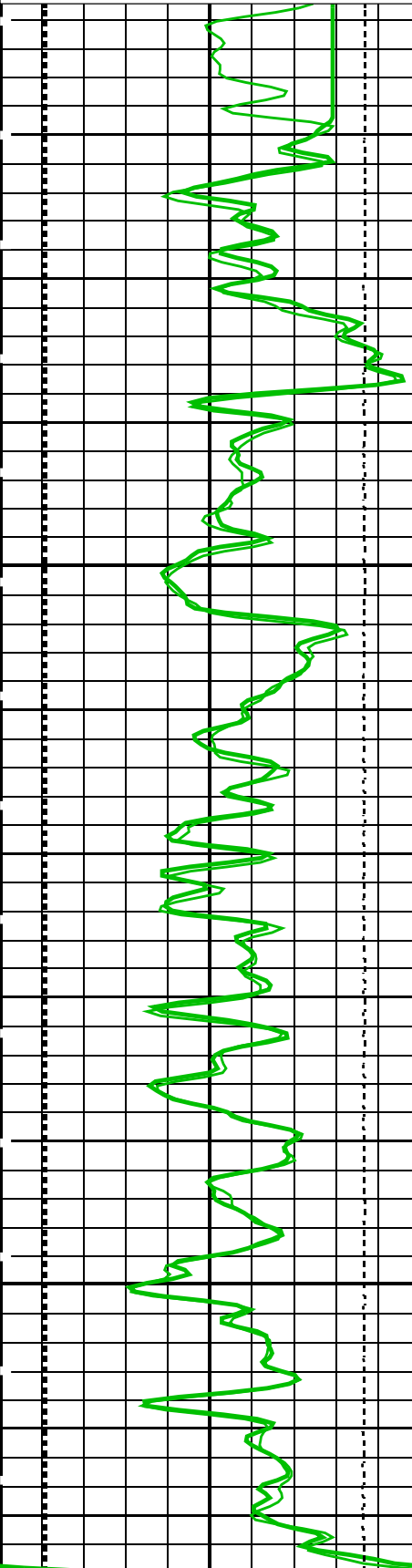
0 (GAPI) 150

BS_REP Curve (BS_REP)

50 (MM) 300

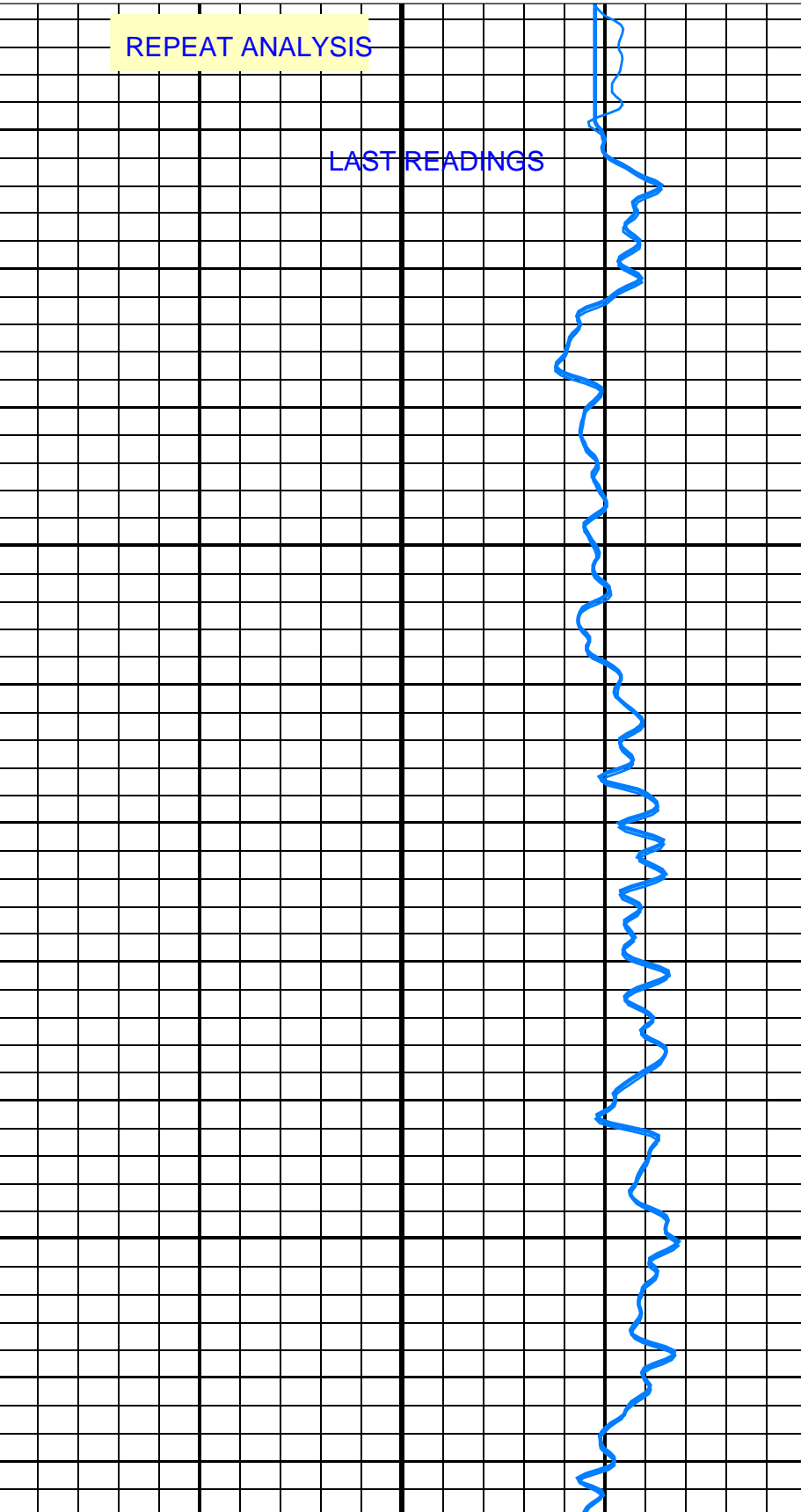
DT_REP Curve (DT_REP)

500 (US/M) 100



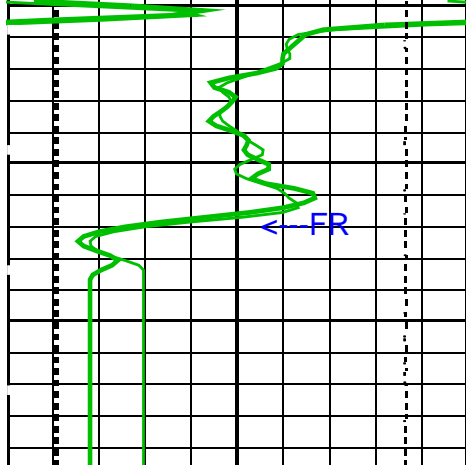
1525

1550



REPEAT ANALYSIS

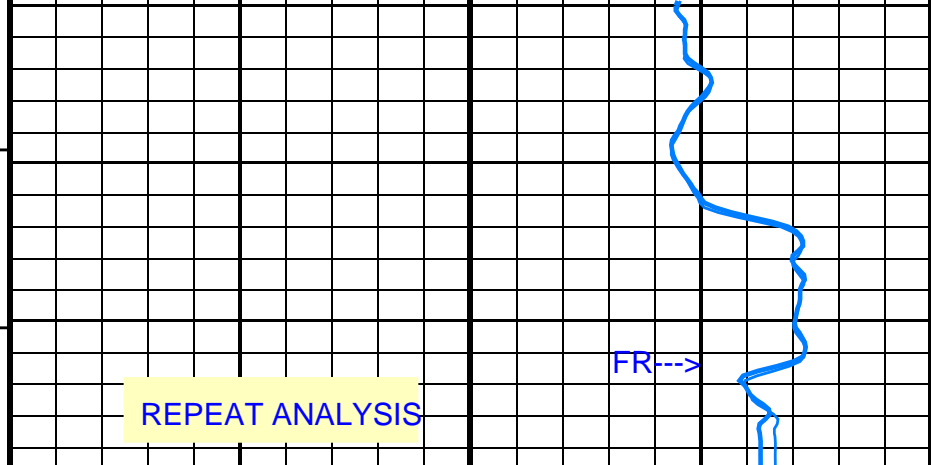
LAST READINGS



BS_REP Curve (BS_REP)
50 (MM) 300

GR_STGC_REP Curve (GR_STGC_REP)
0 (GAPI) 150

TENS_REP Curve
(TENS_REP)
20000 (N) 0



DT_REP Curve (DT_REP)
500 (US/M) 1000

PIP SUMMARY

- └ Integrated Transit Time Minor Pip Every 1 MS
- └ Integrated Transit Time Major Pip Every 10 MS

Time Mark Every 60 S

Parameters

DLIS Name	Description	Value
ACSR	Array Cycle Skip Recovery	ON
AMSG	Auxilliary Minimum Sliding Gate	180 US
BS	Bit Size	75.770 MM
CBLG	CBL Gate Width	80 US
DDE1	Digitizing Delay 1 - Upper Tx	40 US
DDE2	Digitizing Delay 2 - Lower Tx	40 US
DDE3	Digitizing Delay 3 - Far Tx	40 US
DETE	Detection Peak	E2
DFAD_ATC	DFAD Automatic Threshold Control	ON
DFAD_INTERVAL_MODE	Detection Interval Mode for first arrival	TRACK
DLSR	Depth Log Sampling Rate	TT1.5_WF6
DO	Depth Offset	-1.5 M
DORL	Depth Offset Repeat Analysis	-1.5 M
DSIN	Digitizing Sample Interval	10 US
DTCM	Delta-T Computation Mode	FULL
DTLCM	Delta-T Long Computation Mode	FULL
DWCO	Digitizing Word Count	256
GAI1	Gain Control 1 - Upper Tx	HIGH
GAI2	Gain Control 2 - Lower Tx	HIGH
GAI3	Gain Control 3 - Far Tx	HIGH
MAHTR	Manual High Threshold Reference	40
MNHTR	Minimum High Threshold Reference	30
MODE	Sonic Firing Mode	DT_BHC
NMSG	Near Minimum Sliding Gate	140 US
NMXG	Near Maximum Sliding Gate	750 US
NUMP	Number of Detection Passes	2
NWI	Number of Waveform Items	6
PP	Playback Processing	NORMAL
RATE	Sonic Firing Rate	8.92857 HZ
SFAF	Sonic Formation Attenuation Factor	0 DB/M
SGAD	Sliding Gate Allow/Disallow	ON
SGCL	Sliding Gate Closing Delta-T	558 US/M
SGCW	Sliding Gate Closing Width	33 US
SGDT	Sliding Gate Delta-T	131 US/M
SGW	Sliding Gate Width	80 US
SLEV	Signal Level for Threshold Control	5000
WMAG	DFAD Waveform Magnifier	1
ZCGW	Zero Crossing Gate Width	100 US
ZCTT	Option to compute Zero Crossing Transit Time	OFF

Format: SSLT_DT_REP Vertical Scale: 1:240

Graphics File Created: 18-Jan-2001 03:08

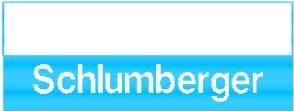
MCM						
SSLT-B	OP9-KP2			STGC-B	OP9-KP2	
Input DLIS Files						
DEFAULT	SSLT .007	FN:6	PRODUCER	18-Jan-2001 00:59	1577.6 M	789.7 M
DEFAULT	SSLT .006	FN:5	PRODUCER	18-Jan-2001 00:36	1577.9 M	1510.8 M
Output DLIS Files						
DEFAULT	SSLT .008	FN:7	PRODUCER	18-Jan-2001 03:08		

Calibration and Check Summary							
Measurement	Nominal	Master	Before	After	Change	Limit	Units
SLIM Telemetry Gamma-ray Cartridge - B Wellsite Calibration - Detector Calibration							
Before: 17-JAN-2001 16:44							
Gamma Ray (Jig - Bkg)	144.9	N/A	144.9	N/A	N/A	13.17	GAPI
Gamma Ray (Calibrated)	155.1	N/A	155.1	N/A	N/A	15.00	GAPI

SLIM Telemetry Gamma-ray Cartridge - B / Equipment Identification	
Primary Equipment:	
STGC Gamma-ray & Accelerometer Cartridge	STGC - B
STGC Telemetry Cartridge	STGC - A
Auxiliary Equipment:	
SLIM Electronics Cartridge Housing	STGH - B

SLIM Telemetry Gamma-ray Cartridge - B Wellsite Calibration											
Detector Calibration											
Phase	Gamma Ray Background GAPI		Value	Phase	Gamma Ray (Jig - Bkg) GAPI		Value	Phase	Gamma Ray (Calibrated) GAPI		Value
Before			8.447	Before			144.9	Before			155.1
0 (Minimum)	30.00 (Nominal)	120.0 (Maximum)		131.7 (Minimum)	144.9 (Nominal)	158.0 (Maximum)		140.1 (Minimum)	155.1 (Nominal)	170.1 (Maximum)	
Before: 17-JAN-2001 16:44											

<div> <div>COMPANY:</div> <div>DEER LAKE OIL & GAS INC.</div> </div> <div> <div>WELL:</div> <div>DEER LAKE OIL & GAS ET AL WESTERN ADVENTURE NO</div> </div> <div> <div>FIELD:</div> <div>EXPLORATORY</div> </div> <div> <div>PROVINCE:</div> <div>NEWFOUNDLAND</div> </div>	BOTTOM LOG INTERVAL	1573 m
	SCHLUMBERGER DEPTH	1575 m
	DEPTH DRILLER	1584 m
	KELLY BUSHING	92.5 m
	DRILL FLOOR	92.5 m
	GROUND LEVEL	90 m



BOREHOLE COMPENSATED

SONIC LOG